



RUBICON THEATRE COMPANY

A man and a woman are silhouetted against a dark blue, misty forest at night. They are holding hands and looking at each other. A bright starburst light emanates from behind the woman. The background shows trees and a large rock.

DARK
OF THE MOON
A NEW MUSICAL

BEING HUMAN IS HEARTBREAK

MARCH 29 - APRIL 16, 2023

Our Fair Lady

BARBARA MEISTER

24TH Season Sponsor



Kimberly Hessler as Eliza Doolittle in
My Fair Lady at Rubicon.
Photo Credit: Jeanne Tanner

For information about becoming a sponsor or an underwriter, please contact Producing Artistic Director Karyl Lynn Burns at 805.667.2912, ext. 224, or klburns@rubicontheatre.org.

PRESENTING SEASON SPONSORS

Barbara Meister
Mary Ann Cohen

SHOW SPONSORS

Jeanne P. Adams, Ph.D
Channel Islands Law Group
Hilford Moving and Storage
The Kurtz Family in Loving Memory of Normand Kurtz
Judith R. Nelson
Eileen Ogle
Stephanie and Kurt Zierhut

SHOW CO-SPONSOR

Jordan Laby

COMMUNITY SPONSORS

Chris Wells Construction

MEDIA PARTNER

Jill Webb - Go City Shopper



The season is made possible, in part, through a grant from the City of San Buenaventura's Parks, Recreation and Community Partnerships Department.

WELCOME LETTER

RUBICON THEATRE COMPANY

DARK OF THE MOON

Dear Friends:

Welcome to this developmental world premiere of *Dark of the Moon: A New Musical*. We are honored to present this timeless and beautiful story about two young lovers from different worlds trying to find a way forward in the face of prejudice and fear.



Dark of the Moon marks Rubicon Theatre Company's 45th mainstage production of a new play or musical; also the largest and most ambitious. It comes at a time when we as an organization (and other theatres across America) are still reeling from the financial impact of the lower ticket sales last season as we returned from the pandemic hiatus. So how did it happen? How were we able to produce a show of this magnitude during this time?

Dark of the Moon is only made possible in our intimate space through the support of Michael Jackowitz, Jeffrey Grove and other good friends whose names you will see in this program. They have supported Rubicon through more than four years of discussions, table readings and Plays-in-Progress programs. We thank them for offering our theatre and our community an opportunity to play a small role in the creation of a show that we know will have a long life beyond this initial production. We are also grateful to the creators Lindy, Dave, Jonathan and Steve for trusting us with their baby. And of course, our saintly, small board and staff have made great sacrifices and given their all to make this happen.



If you would like to support Rubicon's continuing commitment to creating new works and nurturing the artistry of established and emerging playwrights, please contact us to contribute to the company's Innovation Fund. In this new era, it will take extraordinary support of all kinds to keep our theatre alive – financial support, volunteer energy, board engagement, etc. Please help us boldly tell diverse stories that are entertaining and meaningful and that connect us to each other and to our humanity.

Blessings,

Karyl Lynn Burns
Producing Artistic Director/Co-Founder

Douglas Halter
Board President

24TH SEASON

KARYL LYNN BURNS
Producing Artistic Director

JAMES O'NEIL
Artistic Director Emeritus

165TH PRODUCTION

In association with

BARBARA MEISTER **JUDITH R. NELSON**

Presents

**DARK
OF THE MOON**
A NEW MUSICAL

Book by **JONATHAN PRINCE**

Music and Lyrics by **LINDY ROBBINS, DAVE BASSETT** and **STEVE ROBSON**
Adapted from the Original Play by **HOWARD D. RICHARDSON** and **WILLIAM BERNEY**

Choreography by **CHRISTOPHER GATTELLI**

Musical Supervision, Vocal Arrangements and Additional Orchestrations by **BRAD HAAK**
Musical Direction by **BRENT CRAYON**

Directed by **JAMES O'NEIL**

Starring

Ava Delaney* **Jake David Smith*** **Timothy Warmen*** **Jennifer Leigh Warren***

Featuring

Ximena Valentina Alvear, Phillip Attmore*, Teri Bibb*, Marc Cardiff*, CJ Cruz, Sylvie Davidson*, Anna Demaria, Michael Deni*, Michael Stone Forrest*, Joseph Fuqua*, Dylan Goike, Anastacia Righetto Jones, Jane Macfie*, Madeline Marquis, Lauralyn McClelland*, Juliette Redden*, Mark C. Reis*, Spencer Ty, Trevor Wheetman, Heather Youmans and Lesli Margherita*
with a special appearance by

Whole Hog Band

Orchestrator **DILLON KONDOR**

Associate Choreographer/Additional Musical Staging by **MARK MYARS**

Set Designer
MIKE BILLINGS+

Costume Designer
PAMELA SHAW+

Technical Director
ANTHONY COLOMBO

Fight Choreographer
PATRICK VEST

Lighting/Production Designer
ANDREW SCHMEDAKE

Associate Producer
STEPHANIE COLTRIN

Dialect Consultant
JOEL GOLDES

Associate Sound Designer
DANNY FIANDACA

Assistant Stage Manager
MADISON CHMIELEWSKI*

Sound Designer
JONATHAN BURKE+

Props and Furniture Designer
ALEX CHOATE

Production Stage Manager
PHIL GOLD*

Publicist
DAVID ELZER/DEMAND PR

This production is made possible in part with assistance from

WitzEnd Productions, Jeffrey Grove, Pulse Productions, and Joralem Heights Ventures.

Dark of the Moon: A New Musical is presented by special arrangement with the
RICHARDSON/YALE PROPERTY TRUST, ELLIOT S. BLAIR, ADMINISTRATOR

*The director and choreographers for this production are members of the Society of Stage Directors and Choreographers (SDC).
Members of United Scenic Artists.

Appears courtesy of Actors Equity Association, the professional union for actors and stage managers in the United States.

JOIN RUBICON THEATRE FOR SPRINGTIME IN NEW YORK

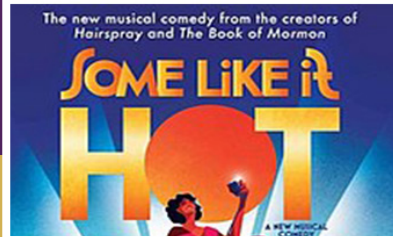
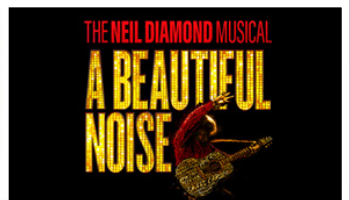
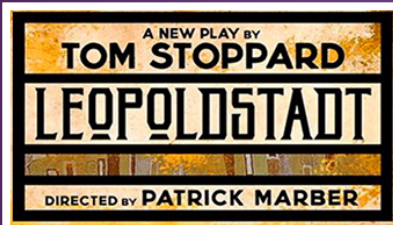
May 2–7, 2023

DON'T MISS THIS FINAL SPECIALLY CURATED GROUP EXCURSION

Led by Retiring Artistic Director Karyl Lynn Burns!

5 Night/6 Day Trip with Times Square Accommodations,
4 Broadway Shows, Behind-the-Scenes Adventures,
a Meet-and-Greet with Broadway Stars, Group Dining at
a Michelin-Starred Restaurant, and a Tour of Harlem

Shows in consideration:



RUBICON TRIPS SELL OUT QUICKLY...RESERVE NOW!

To make a reservation, please contact:
ARACELI AGGARWAL

aagarwal@rubicontheatre.org or call 805.667.2912 x246

CAST, ROLES AND UNDERSTUDIES

RUBICON THEATRE COMPANY

DARK OF THE MOON

CAST OF CHARACTERS

Barbara AllenAva Delaney
John the Witch-BoyJake David Smith*++
Saoirse, a signer Sylvia Davidson*

The Humans of Buck Creek

Marvin Hudgens, the town's most eligible bachelorMichael Deni*
Preacher Haggler, a loquacious minister Marc Cardiff*
Floyd Allen, Barbara's younger brotherCJ Cruz
Thomas Allen, Barbara's fatherJoseph Fuqua*
Gemma Allen, Barbara's mother Teri Bibb*
Ralph Wharton, Owner of the General Store Michael Stone Forrest*
Ella Bergen, Floyd's girlfriend Anna Demaria
Patricia Bergen, Ella's mother and the local midwife Jane Macfie*
Uncle Deuce Phillip Attmore*
Katie Summey Heather Youmans
Trevor Gudger Trevor Wheatman
Townspople Ximena Valentina Alvear (Vocals), Anastacia Righetto Jones,
Lauralyn McClelland*+, Madeline Marquis (Vocals),
Mark C. Reis*, Spencer Ty

The Witches of the Smoky Mountains

Conjur Woman, an ageless enchantress Jennifer Leigh Warren*
Conjur Man, an ageless warlock Timothy Warmen*
Arwen, the Fair Witch Juliette Redden*
Raven, the Dark Witch Lesli Margherita*
Devin, the Grey Witch Dylan Goike
The CovenXimena Valentina Alvear, Madeline Marquis, Spencer Ty (Vocals)

UNDERSTUDIES

Understudies never substitute for listed players unless an announcement is made prior to the performance.

Barbara (Juliette Redden), Raven (Ximena Valentina Alvear),
Arwen (Madeline Marquis), Conjur Man/Ralph Wharton/Preacher Haggler
(Mark C. Reis*), Devin (Spencer Ty)

Featured tap choreography by Philip Attmore and Lauralyn McClelland

*Member of Actors Equity Association

+Dance Captain

++Fight Captain



TIME TRAVEL

Pippi Longstocking meets Downton Abbey at our treasured Victorian in historic downtown Ventura. Only blocks from the celebrated Rubicon Theatre, enjoy the wonders of our iconic coastal community as our esteemed guest.

THE ARABELLA

AN ACCOMODATION AS UNIQUE AS YOU

CONTACT
ELIZABETH JEBEF
805.889.0353



STVR NO. 2319



MUSICIANS AND PRODUCTION NOTES

RUBICON THEATRE COMPANY

DARK OF THE MOON

MUSICIANS

Onstage

Keith Frankel.....	Banjo, Whole Hog
Corey Highberg.....	Standup Bass, Whole Hog
Seth Andrey Oster.....	Guitar, Whole Hog and Electric Guitar/Offstage Band
Charletta Erb.....	Fiddle, Whole Hog
Trevor Wheetman.....	Mandolin, Whole Hog

Offstage

Brent Crayon.....	Conductor/Keyboards
Emiliano Almeida.....	Drums
Carlos Rivera.....	Electric Bass
Oliver Walton.....	Cello
Lior Tzemach.....	Guitar
David Cano.....	Violin

PRODUCTION NOTES

Setting

Dark of the Moon: A New Musical is set in the fictional Appalachian town of Buck Creek and the Smoky Mountains above it.

Time

Then...and now.

The TOWNSPEOPLE of Buck Creek live in the very real world of their homes and farms, the general store, the church, and the rest of the natural and man-made world they know. To most of them, the witches are merely a fear of something they've never seen. A story. A rural myth.

The COVEN OF WITCHES and CONJUR PEOPLE live in the Smoky Mountains of the Appalachians, but they move freely around the world of humans, observing but unseen. There are moments in which the more powerful magical beings, Conjur Man and Conjur Woman, can make themselves – and the witches – visible to the humans. But that's something done only rarely.

JOHN THE WITCH-BOY, once his wish is granted, becomes visible to both the humans and the witches.

MUSICAL NUMBERS

RUBICON THEATRE COMPANY

DARK OF THE MOON

ACT 1

"The Ballad of Barbara Allen"	Saoirse
"Ordinary Life"	Uncle Deuce, Preacher Haggler, Mrs. Bergen, Gemma Allen, Thomas Allen, Floyd, Marvin, Katie, Ella, Barbara Allen and Townspeople
"Under Our Spell"	Raven, Arwen, Devin, Conjur Man, Conjur Woman, John and Coven
"Wildflower"	Barbara and John
"Goodbye Mrs. Wharton"	Ralph Wharton, Barbara, John and Congregation
"Make Me Human"	John, Conjur Man, Conjur Woman, Raven, Arwen and Coven
"Dark of the Moon (Preprise)"	Coven and John
"Raising Hell in Heaven"	Uncle Deuce, Katie, Whole Hog, Trevor and Company
"Maybe"	Barbara and John
"Hey Johnny"	Raven, Arwen and Devin
"I'd Die For You"	John
"Life Sucks"	Floyd and John
"With this Ring"	Preacher Haggler, Barbara, John and Company

INTERMISSION

"I Wish I Was a Witch"	Whole Hog Band
------------------------------	----------------

ACT 2

"Ballad of Barbara Allen Part 2"	Saoirse
"Never Gonna Last/What it Takes to Be a Man"	Katie, Mrs. Bergen, Ralph, Marvin, Raven, Devin, Arwen, Coven, Townspeople, John, Barbara and Conjur Man
"Love is All We Got"	Barbara and John
"Certified Rock Star"	John, Coven, Floyd and Ella
"The Longest Night"	Gemma
"Play a Little Dirty"	Arwen, Raven, Devin, Coven and Conjur Woman
"Something About You"	John
"Tipsy as a Cow"	Uncle Deuce, Barbara, Trevor, Katie, Thomas, Gemma, Floyd and Ralph
"Unthinkable"	Barbara
"I'd Die for You (Reprise)"	Barbara
"Dark of the Moon"	Conjur Woman and Coven
"Forgive Me"	John and Barbara
"Ballad of Barbara Allen Part 3"	Saoirse and Company



JONATHAN PRINCE

(Book Writer), after graduating from Harvard University, turned a serendipitous Las Vegas meeting with

George Burns into writing the film “18 AGAIN.” Prince furthered his career writing and producing over 200 hours of television on network, cable and streamers. Many of Prince’s projects have strong musical themes, including his celebrated Emmy-winning NBC series “American Dreams” and the musical film “1660 Vine.” Music also played a vital role in his multi-year B.E.T. series “American Soul,” his HBO series “Off the Record” (with producer Jimmy Iovine) and pilots Jonathan developed with Mick Fleetwood, Stewart Copeland, and Broadway composer Andrew Lippa. Prince’s other notable television projects include the event-series “38 NOOSES” with producer Robert Redford, the Hulu limited series “Four Weddings and a Funeral” with Mindy Kaling, and the innovative drama series “12 Rooms” for Amazon. In addition to his writing career, Prince has directed multiple television pilots and episodes, as well as films for CBS, Hallmark, and the Disney feature “Camp Nowhere.” And when introduced to the world of branded integration, Prince took to it with ferocity: his television work with Campbell’s, Ford, General Motors and Wal-Mart has been hailed as groundbreaking. Jonathan’s current slate includes projects with award-

winning partners like Billy Porter, Whoopi Goldberg, Marlee Matlin, Broadway director Charles Randolph-Wright and National Book Award winner Colum McCann. He is currently developing a “Studio 54” television series, producing the Netflix feature comedy “Rock the Boat” for stars Rebel Wilson and Leslie Mann, and is thrilled to be writing the book for another stage musical with Mr. Lippa. As the son of a Special Ed teacher and a School Board member, Prince has always been involved in the world of children, charity and education. He co-founded the Water Buffalo Club, a 35-year-old children’s charity and chaired the reboot of his city’s Education Foundation. It’s with this passion for non-profits and his belief that the arts can do more than inspire – they can activate – that he created and co-founded PhilmCo, his double-bottom line media company which currently has films with the American Cancer Society, the World Wildlife Fund and Heifer International. With all the good fortune that has come his way, Prince’s greatest blessing is his family: his four sisters; his wife Darnell; step-kids Kaile, Alec and Nadia; and his son, Jackson.



LINDY ROBBINS

(Composer and Lyricist) is a multi-platinum and award-winning songwriter from L.A. who has had over 300 releases. She is beyond

thrilled to have co-written songs for her first musical *Dark of the Moon*. Lindy

SPRING INTO

ACTION



Visit us today!
mention this ad and

Get \$20 OFF
a 30-Day PRC *Lifestyle Experience*

(Some restrictions apply. A one time offer only.)



PIERPONT
RACQUET CLUB

find your people here

Located by the beach!
500 Sanjon Rd. Ventura, CA
805.648.5161

www.pierpontclub.com
[@pierpontclub](https://www.instagram.com/pierpontclub)



first became known as a songwriter in the 90's NYC cabaret scene and was a member of the acclaimed vocal group "The Tonics." After moving back to L.A. in 1997 to fulfill her dream of writing mainstream radio songs, Lindy has garnered multiple #1's, including the worldwide smash "Want to Want Me" by Jason Derulo, "Classic" by MKTO, (which has reached over a billion streams), "Dangerous" by David Guetta, "Day Drunk" by Morgan Evans, Hot Chelle Rae's "Tonight, Tonight," and "A Different Way" by DJ Snake feat. Lauv. Other chart toppers include: "Skyscraper" and "Here We Go Again" by Demi Lovato, "Slow Down" by Selena Gomez, "It Girl" by Jason Derulo, "Miss Movin' On" by Fifth Harmony, "Crybaby" by Paloma Faith" and "Hurts So Good" by Astrid S; as well as the Top 5 Singles "Incomplete" (Backstreet Boys), "What's Left of Me" (Nick Lachey), "Try Me" (Derulo feat. Jlo), and the 2006 Disney Song of the Year "Cinderella" by The Cheetah Girls. These hits have earned her five ASCAP pop awards. Known for her versatility and longevity, Lindy's songs have also been released by artists including: Dua Lipa, Keith Urban, H.E.R., One Direction, Kelly Clarkson, Bebe Rexha, Zedd (feat. Julia Michaels), Zendaya, 5 Seconds of Summer, Andra Day, LeAnn Rimes, Rita Wilson, Pentatonix, Billy Porter, Britney Spears, Jennifer Hudson, Shaggy, Idina Menzel, Rachel Platten, Monica, Leona Lewis (feat. One Republic), Faith Hill, Brandy, Liza

Minnelli, Jason Mraz, Ella Henderson, Dixie D'Amelio (feat. Wiz Khalifa), Lisa Loeb, Toni Braxton, Michael Feinstein and Audra McDonald. In addition to continuing to write songs in multiple genres all over the world, Lindy is currently developing a concept musical called *Tenderhearted Fools*. She resides in L.A. with her husband Derek and their two cats.



DAVE BASSETT

(Composer/Lyricist) is a Grammy-nominated, multi-platinum songwriter and producer with more than a dozen #1 hits

to his name. Although Dave's career took off thanks to co-writing rock songs such as Shinedown's multi-platinum #1 smashes "Second Chance" and "If You Only Knew" as well as Halestorm's Grammy Award-winning hit "Love Bites (So Do I)," his work has continually showcased his knack for working in diverse genres as evidenced by his collaborations with The Revivalists, Alice Merton, Fitz and the Tantrums, Brian Setzer Orchestra, Idina Menzel, Josh Groban, and many more. In 2015, Dave's career catapulted to new levels as his collaboration with Elle King resulted in two Grammy nominations for the song "Ex's and Oh's" which he not only co-wrote, but also produced. "Ex's and Oh's" also earned Dave ASCAP pop awards in both 2016 and 2017. That same year, Dave co-wrote Rachel Platten's breakout triple platinum worldwide smash "Fight Song" for which

he also won an ASCAP pop award. Since, Dave has become a constant “go to” writer in the alternative and pop community and has seen continued success co-writing and producing countless records including Vance Joy’s *Nation of Two* and *In Our Own Sweet Time* LPs, which feature his chart-topping, Platinum-Certified hits “Saturday Sun” and “Lay It On Me,” as well as Weezer’s #1 hit “Hero.” Dave is also a sought-after writer and producer within the film and TV community, having placed songs in movies such as “Sing,” “Cars 3,” “Pitch Perfect 3,” “Ghostbusters,” “Sweet Home Alabama,” and “Runaway Bride,” to name just a few. Dave lives in Malibu with his wife and two daughters, and writes and records in his solar-powered studio “Chateau Relaxeau,” which has become a favorite creative destination for some of the world’s top artists.



STEVE ROBSON
(*Composer/Lyricist*)
is an English
songwriter and
record producer
who has sold
over 138 million

records around the world. He has written and produced 12 #1 UK/US singles, 38 #1 UK/US albums and a further 41 Top 5 UK/US albums and singles. He is Grammy-nominated for Rascal Flatt’s “What Hurts the Most,” which also won BMI Song of the Year and a Nashville Songwriters

Association International “10 Songs I Wish I’d Written” award. Steve has won Ivor Novello Awards and Brit Awards for Take That’s “Shine,” and has had a further two Ivor Novello nominations for Olly Murs’ “Troublemaker” and “Dance with Me Tonight.” Career highlights include #1 singles for Olly Murs (“Troublemaker,” “Dance with Me Tonight,” “Please Don’t Let Me Go”), Take That (“Shine”), Rascal Flatts (“These Days,” “What Hurts the Most,” “My Wish,” “I Won’t Let Go”), Leona Lewis (“Run”), Helping Haiti (“Everybody Hurts”), Busted (“You Said No”), [15] Westlife (“Queen of My Heart”), and #1 albums for Little Mix, One Direction, Olly Murs, 5 Seconds of Summer, Robbie Williams, Take That, Ella Henderson, John Newman, Leona Lewis, Westlife, Blue, Faith Hill, Wynonna Judd, Carrie Underwood, James Morrison, and Natalie Imbruglia.

HOWARD D. RICHARDSON

(*Playwright of the Original Play “Dark of the Moon”*), (1917 – 1984), was born in Spartanburg, South Carolina, into a literary family. (He was the nephew of Tom Dixon, the author of the book *The Clansman* which was adapted for the film entitled “Birth of a Nation.”) Howard wrote *Dark of the Moon* while enrolled at the State University of Iowa. His cousin William Berney was at university with him, and Howard convinced Berney to become his collaborator. Howard felt Berney had a more poetic flair and a good sense of the local mountain idiom and cant. Howard wrote many other dramatic works, solely or in collaboration with

Berney, Francis Goforth (who acted as Miss Metcalf in the Broadway production of *Dark of the Moon*), and others. Highlights include *Design for a Stained Glass Window* (with Charlton Heston) and *Protective Custody* (with Faye Emerson), as well as scripts for television.

WILLIAM BERNEY (*Playwright of the Original Play "Dark of the Moon"*), (1920 – 1961), a native of Birmingham, Alabama, was Howard Richardson's

cousin. He attended the University of Iowa with Howard and collaborated in writing the work. Berney also collaborated with Howard in writing *Protective Custody* and *Design for a Stained Glass Window*. After college, Berney was instrumental in obtaining exclusive rights for *Life Magazine* to include pictures of the newly developed B-20 bomber from Boeing Aircraft. Berney also crafted scripts for Matinee Theatre and Philco Theatre.

*A Special Thanks to Our
Rubicon Jewel Club Sponsor*



**CARPINTERIA
WINE COMPANY**

FINE WINES AT DISCOUNT PRICES

**(805) 684-7440 | WWW.CARPINTERIAWINECO.COM
4193 CARPINTERIA AVE. #1, CARPINTERIA, CA 93013**



RUBICON
THEATRE COMPANY

Be a Permanent Part of the Theatre's History!

THE ROSE ROOM

Wall of Fame

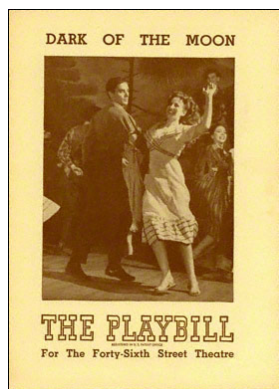


Have your likeness or that of a loved one painted by internationally renowned painter Michael O'Kelly and included in a 32' mural featuring many renowned Rubicon artists who have appeared in musicals or cabarets at the theatre.

For more information, contact:

KARYL LYNN BURNS

805.667.2912 x224 | klburns@rubicontheatre.org



The original Broadway Playbill for "Dark of the Moon."

In 1939, while a student at the University of Iowa, Howard Richardson wrote a play entitled *Night Song* loosely based on Scottish/English folklore and the centuries-old song "The Ballad of Barbara Allen." As the play developed, Howard invited his cousin and fellow university student William Berney, whom he felt had an ear for the vernacular, to collaborate with him on the piece. It was first performed in 1942 at the University of Iowa under the title *Barbara Allen*, and a rewrite later was presented as *Dark of the Moon* at the Brattle Playhouse in Cambridge Massachusetts.



A young Paul Newman played John the Witch-Boy.

A production of the Play was initially produced by Lee and J. J. Shubert and opened on Broadway in March of 1945 at the Forty-Sixth Street Theatre (now the Richard Rodgers Theatre) where it had a successful run of 316 performances. The original London production enjoyed a long run at the Ambassador Theatre in 1949 and was a much-admired production directed by a young 24-year-old rising star named Peter Brook. *Dark of the Moon* was the maiden production of the acclaimed New York Circle in the Square Theatre in 1951. Now considered a classic, *Dark of the Moon* toured nationally and has been produced globally, attracting numerous amateur, stock and other productions.

Dark of the Moon has the distinction of being categorized, for the first time by the Dramatists Guild as a play with music (as distinguished from a musical). The play was the recipient of the Maxwell Anderson Award.

Numerous luminaries have acted in *Dark of the Moon*, including Paul Newman, George C. Scott, Cecil Tyson, James Earl Jones, Gower and Marge Champion, Betsy Palmer, and Shelley Berman.



Peter Brook at age 24 directed the London premiere (here pictured at Stratford Upon Avon).



XIMENA VALENTINA ALVEAR (*Ensemble, u/s Raven*) is a local performer who is very excited to be returning

to the Rubicon stage. *Dark of the Moon* marks her second Rubicon production following her professional debut in *In the Heights*. She has performed in several stage productions at Ventura College, including *Cabaret*, *Ghetto*, *Hold Me* and *The Mystery of Edwin Drood*. Ximena is elated to be a part of the World Premiere of *Dark of the Moon* and looks forward to seeing how far the show will go. Apart from acting, she also sings, models, and works in social media management. She thanks Karyl Lynn Burns, Brent Crayon, Brandon King, and her amazing friends, family, and teachers who have always been there to support her. She extends special thanks to the backstage crew at Rubicon who work so hard to keep the shows running smoothly. @ximenavalentinaaa



PHILLIP ATTMORE* (*Uncle Deuce*) has been in multiple Broadway Shows, including *Hello, Dolly!*, *Shuffle Along...*, *On*

the 20th Century, *After Midnight*, *Irving Berlin's White Christmas*,

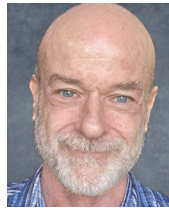
and *Chitty Chitty Bang Bang*. He has performed off-Broadway in *Cheek to Cheek: Irving Berlin in Hollywood*, and several New York City Center Encores! productions, including *The Tap Dance Kid*, *I Married an Angel*, *Me and My Girl*, and *Gentlemen Prefer Blondes*. Touring and regional credits include *Phillip Attmore: Moments Musicaux* (as the opening solo cabaret act for Audra McDonald at the Théâtre du Châtelet in Paris), *Fosse* (international tour with guest artist Ben Vereen), Tin Man in *The Wiz* (5th Avenue Theatre in Seattle), Don Lockwood in *Singin' in the Rain* (Arrow Rock Lyceum Theatre), *Stormy Weather* (starring alongside Leslie Uggams at the Pasadena Playhouse), *Ray Charles Live!* (Pasadena Playhouse), *42nd Street* (as Billy Lawler at the Drury Lane Theatre in Chicago and the Ordway in St. Paul, and as Andy Lee at the MDM in Moscow). He recently made his Carnegie Hall debut as Harold Nicholas in the all-star cast concert *The Songs of Dorothy Dandridge! The Musical*. Film and television credits include "The Marvelous Mrs. Maisel," "The Late Late Show with James Corden," "So You Think You Can Dance" (Season 6 Top 20 Cast), "The Bold and the Beautiful," "Judging Amy," "Sisters," "Silent Tongue," "The Ellen DeGeneres Show," "The Today Show," "Maya and Marty," and "The Tony Awards." Mr. Attmore is an NAACP Theatre Award nominee and a three-time Astaire Award winner (now called the Chita Award).



TERI BIBB (*Gemma*) is happy to be back at Rubicon, where she appeared in every production of *A Rubicon Family Christmas* and *A*

Christmas Carol, in *Big River*, and in many concerts over the years. She most recently played Meg Boyd in *Damn Yankees* for Musical Theatre West, and before the world “paused” she appeared in *It’s a Wonderful Life* for ETC in Santa Barbara, sang Lilli/Kate in *Kiss Me, Kate* with the Marina del Rey Symphony, and played Abigail Adams in *1776* for McCoy-Rigby Productions. Teri’s Broadway credits include over 1,000 performances as Christine in *The Phantom of the Opera*, including the National Tour, for which she earned a Helen Hayes Award nomination and a Carbonell Award; and Amalia in *She Loves Me* (standby). Regionally, she was Margaret in *The Light in the Piazza* at Farmers Alley Theatre, and she starred in the world premieres of two musicals: *Songs from the Tall Grass* (Ford’s Theatre) and *Children of the Night* (Beverly Hills Playhouse - Ovation Award nomination). Teri has been a featured soloist at Carnegie Hall, London’s Royal Albert Hall, Belfast’s Odyssey Arena, and Radio City Music Hall (duets with José Carreras); has sung with orchestras across the U.S.; and can be heard on the recordings “Unsung Irving Berlin” and “A Gala Concert for Hal Prince.” She has guest-starred on TV; been a

supporting player on film; and has sung on several film scores, including “Ice Age” and “Polar Express.” Teri was also a guest soloist on ABC’s “Dancing with the Stars.” www.TeriBibb.com



MARC CARDIFF

(*Preacher Haggler*), a Ventura native, is delighted to return to his hometown for this exciting new work. Longtime Rubicon

audiences may remember Marc’s portrayal of Tom, Phyllis, and Leslie in *Sylvia* during the 2002 and 2003 seasons. Most recently, he originated the role of Edgar Lipton in another new musical, *Bronco Billy*, at the Skylight Theatre in L.A. (L.A.). Other notable roles include understudy/ replacement for Tony Shalhoub in Beckett’s *Happy Days* at the Theatre at Boston Court in Pasadena, Charlotte Von Mahlsdorf (and 36 other characters) in *I Am My Own Wife* at the Arena Theatre at CSULA, Gaston in *An Empty Plate at the Café du Grand Bœuf* at the Laguna Playhouse, The Founder in *Bukowsical!* at the Bleecker St. Theatre in New York, Henry Higgins in *My Fair Lady* at Sierra Repertory, Dick Deadeye in *HMS Pinafore* at Arizona Theatre Company (ariZoni Award), and first cover for Juan Perón in the 25th Anniversary International Tour of *Evita* under the supervision of the legendary Harold Prince. Marc is a graduate of Buena High School (go Bulldogs!) and has a B.A. from Occidental College as well as an M.A. from CSULA, both in Theatre Arts. He lives in L.A. with his... oh wait, it’s just him.

ABOUT THE ARTISTS | Cast

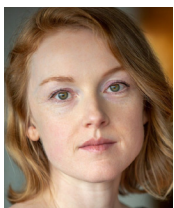
RUBICON THEATRE COMPANY

DARK OF THE MOON



CJ CRUZ (*Floyd Allen*) was born in Jacksonville, Florida and grew up as a Navy brat. His father came to the U.S.

from the Philippines, making him a second-generation immigrant. CJ studied psychology, theatre, and documentary filmmaking at Duke University. You can catch him onscreen in the film “1660 Vine,” or onstage at stand-up comedy shows in L.A. CJ is thrilled to be acting in his first professional theatre production! @realcjcruz



SYLVIE DAVIDSON (*Saoirse*) is grateful to be returning to Rubicon, where she has been previously seen as Hallie in *The Man Who Shot*

Liberty Valance, Cordelia in *King Lear*, and as a musician and singer/songwriter in *Lonesome Traveler*, *Lonesome Traveler: Generations*, and *I Dig Rock and Roll Music*. Sylvie has performed on stages across the country as both an actor and a musician. Favorite regional credits include Inez in the world premiere musical *Troubadour* at the Alliance Theatre in Atlanta, Emma in Jane Austen’s *Emma* at Book-It Repertory Theatre, and Abigail in ACT Theatre’s *The Crucible*. Most recently, she spent two seasons as a company member at the American

Shakespeare Center. This summer she will be playing Viola in Island Stage Left’s production of *Twelfth Night* on Washington’s San Juan Island. Sylvie writes and performs music with her husband Trevor Wheatman, whom she met at Rubicon at the first rehearsal of *Lonesome Traveler*. They live in Oregon with their two-year-old son and their scruffy rescue pup. Sylvie is currently pursuing a Master of Arts in Restorative Justice through the Vermont Law School. www.sylviedavidson.com
www.trevorandsylvie.com



AVA DELANEY

(*Barbara Allen*) is a singer-songwriter, actress, poet, performer, painter, and eternal student of life. She graduated from

The Royal Central School of Speech and Drama in London with a B.A. in Musical Theatre in 2021. Ava dedicated 2022 to recording an LP of original music (coming soon!) and playing shows in L.A. with her band Inner Vision. *Dark of the Moon* is her first professional theatrical production since graduating. Roles in school include Maria in *The Sound of Music*, the title role in *Hamlet*, Wendla in *Spring Awakening*, Rose in *Dogfight*, and Alice in *Bright Star*. When not on stage, Ava can be found howling at the moon or barefoot in the soil. Thank you to this dream team and everyone supporting this magical journey! Follow me @avadelaney, AvaDelaney.com.



ANNA DEMARIA
(*Ella Bergen*) is deeply grateful to return to the Rubicon stage to share this story with you. Growing up,

Anna was a student in Rubicon's Education Program, where she played Miss Hannigan in *Annie* and Claire de Loone in *On the Town*. This production marks her professional debut with the company. Anna was last seen onstage in *Macbeth* and *As You Like It* for Kingsmen Shakespeare Company's 25th Anniversary Season, and as Queen Elizabeth I in *The Pirate Queen* at the Scherr Forum Theatre. She is a recent graduate of Marymount Manhattan College. Big thanks to her family, friends, and educators past and present for their love and support. For Mom and Dad. www.annademaria.com
[@anna.demaria](https://twitter.com/anna.demaria)



MICHAEL DENI
(*Marvin Hudgens*) is excited to be working with this amazing cast and crew for his Rubicon debut! Past theatre

credits include *Beast in Beauty and the Beast* (Moonlight Amphitheatre, 40-year box office record), Lt. Cable in *South Pacific* (REV Theatre, SALT Awards Nomination for Best Supporting Actor and Best Ensemble), *Ragtime* (Pasadena Playhouse, Ovation Award for

Best Musical, Nomination for Best Ensemble, Dir. David Lee), and *Mamma Mia!* (Hollywood Bowl, Dir. Kathleen Marshall). Film and TV credits include "T-Rex Ranch" (Netflix, Series Regular), "S.S.M." (Tubi, Dir. Anthony C. Ferrante), "Beaus of Holly" (ION), and "Summer of Violence" (Dir. Nicki Micheaux). Michael is a graduate of UCLA's Musical Theater Program. Special thanks to James, Lindy, Dave, Brad, Chris, Brent, Karyl, and the rest of the *Dark of the Moon* team for this amazing opportunity! @MichaelDeni_ MichaelDeni.net



MICHAEL STONE FORREST (*Ralph Wharton*) makes his second appearance on the Rubicon stage with *Dark of the Moon* after having been

seen in the company's production of *My Fair Lady*. Other regional theatre credits include *Sweeney Todd*, *Sunday in the Park...*, *Passion*, and *Mame* at The Kennedy Center; *Camelot*, *South Pacific*, *Damn Yankees*, and *The Fantasticks* at Arena Stage; *1776* and *To Kill a Mockingbird* at Ford's Theatre; and *Sweeney Todd* and *Mack and Mabel* at Signature Theatre. Southern California audiences have seen Michael at La Mirada, A Noise Within, and ICT. A longtime Washington D.C. resident, Michael was a performer and writer with The Capitol Steps for many years. Film and television credits include "National Treasure: Book of Secrets," "The Invasion," "Syriana," and

“Major League 2.” TV audiences may remember him as Detective Frank Barlow on “The Wire.” Much love to his wife of 36 years Debbie.



JOSEPH FUQUA

(Thomas Allen) most recently appeared as Jimmy, Chad and Danny in *Almost Maine* at Rubicon and as Polonius in

Hamlet with the Pinehurst Players in North Carolina. An M.F.A. graduate of the Yale School of Drama, Joseph’s Broadway and off-Broadway credits include *Brighton Beach Memoirs* and *110 in the Shade* at Lincoln Center. Regionally, Joseph has appeared as Octavius Caesar in *Antony and Cleopatra* at Actors Theatre of Louisville, Alexei in *A Month in the Country* at Arena Stage, Iago in *Othello* for Shakespeare Festival of Dallas, Louis in *Angels in America* at Dallas Theatre Center, and *Six Dance Lessons in Six Weeks*, *Macbeth* and *Fallen Angels* at Ensemble Theatre. On television, Joseph guest-starred in “The X-Files,” “The Profiler,” “Brooklyn South,” “The Pretender,” “Chicago Hope,” “Star Trek: Deep Space Nine,” “Becker,” and the pilot “Second Nature.” Film credits include “Ed’s Next Move,” “David Searching,” “Heyday,” and as J.E.B. Stuart in “Gettysburg” opposite Martin Sheen, a role he reprised in the film “Gods and Generals.” In 2000, Joseph joined Rubicon Theatre as the first company member. His roles with the company include the title role in *Hamlet* (Indy

Award), *The Boys Next Door* (Indy Award), *The Little Foxes*, *The Rainmaker* (Robby Award and Rep Award), *Murder in the First*, *The Glass Menagerie*, *All My Sons* (Ovation Award), *Man of La Mancha*, *Conviction*, Professor Henry Higgins in *My Fair Lady*, *The Importance of Being Earnest*, *Dancing at Lughnasa*, *The Man Who Shot Liberty Valance*, *Fuddy Mears*, *King Lear*, *Incognito*, *South Pacific*, and, just prior to the pandemic, Pap in *Big River*. In July, Joseph directed his 14th Shakespeare production with Rubicon’s Fearless Shakespeare (now the Victoria Horne Oakie Fearless Shakespeare Intensive) which he co-founded. Joseph is eternally grateful to Jim O’Neil and Karyl Lynn Burns for their trust and support over the years. Viva La Rubicon!



DYLAN GOIKE

(Devin) (*He/Him*) is a New York-based actor dedicated to bringing LGBTQ+ stories to the stage. Born and raised in Northern

Michigan, he received his B.F.A. in Musical Theatre from Central Michigan University while performing at regional houses in the Midwest and on the East Coast. After university, Dylan moved to NYC and made his off-Broadway debut as Peter in the English-language premiere of the French opera *Anne Frank* at The Actors’ Temple. Dylan has also done a handful of voiceovers, most notably narrating the audiobook “Not Your Average Friendzone: New York Edition” by Cassie Mae. Dylan sailed across Europe as a vocalist on the

Oceania Sirena. While on board, he performed in large-venue concerts and even developed his own solo shows: *Don't Stop the Rock!* (a rock concert of the hits of 1950-1990), and *Watercolors* (an acoustic set featuring music by singer-songwriters such as Joni Mitchell, Bob Dylan, and Simon and Garfunkel). Other credits include Maximillian in the off-Broadway production of *The Black Count of Monte Cristo* (Theatre Row), Davey in Disney's *Newsies*, and Ethan in *The Full Monty* (Timber Lake Playhouse), Brad in *The Rocky Horror Show* (Forestburgh Playhouse), and, most recently, Diesel in *West Side Story* (Argyle Theatre). Dylan thanks his family and his amazing support system of friends and professionals at The Hell's Kitchen Agency. IG: @dylancgoike, www.dylangoike.com



ANASTACIA RIGHETTO JONES (*Ensemble*), a prodigious singer hailing from California, was born in

2010 to the multi-talented Stacy Francis, a renowned voice on the contemporary music scene. At the age of six, Anastacia performed onstage in front of 400 people, marking the beginning of her musical journey. Thanks to her talent and passion, Anastacia has become a world traveler, joining her mother in performances across various cities and countries. During her

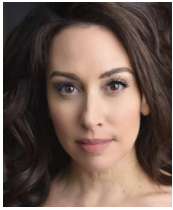
stay in London, she studied French and Mandarin. In 2019, Anastacia performed at Sony Hall in Times Square, where she cemented her status as a rising star. When the producers of *Dark of the Moon* heard her rendition of "Never Enough," they invited her to make her professional theatrical stage debut as the youngest member of the cast. Alongside her musical talents, Anastacia is also a skilled dancer and athlete, and enjoys playing piano, drawing, and painting.



JANE MACFIE (*Patricia Bergen*) has appeared on Broadway in *Long Day's Journey Into Night* with Jason Robards and Colleen Dewhurst, and *Ah,*

Wilderness! with George Hearn and Liz Wilson. Regionally, she has worked at Yale Repertory Theatre, Ozark Actor's Theatre, Studio Arena Theatre, Fulton Opera House, Berkeley Repertory Theatre, and The Magic Theatre; and in L.A. she has appeared in *How the Other Half Loves*, *Major Barbara*, *Hay Fever*, and *Born Yesterday* at South Coast Rep.; *Sir Peter Hall's Romeo and Juliet* at the Ahmanson; and she did four shows at A Noise Within. Jane worked with Rubicon's Stephanie Coltrin in *Romeo and Juliet*, *Richard III*, *Henry V* and more. She also appeared in the award-winning *Exit Strategy* at the L.A. LGBTQ Center; and played Hamlet, Viola, Beatrice, Rosalind, and Truvy in *Steel Magnolias* at the Grove Theater Center. Film and TV credits include "The Mindy Project" (recurring), Nickelodeon's "School of Rock,"

“House of Lies,” “Getting On,” “Frasier,” “Profiler,” the award-winning film “High Water,” “Daddy’s Little Angel,” and more. Jane is a Yale School of Drama graduate.



LESLI MARGHERITA

(Raven) won the Laurence Olivier Award for her West End debut in *Zorro The Musical* and originated

the roles of Mrs. Wormwood in *Matilda The Musical* and Mona Kent in *Dames at Sea* on Broadway. Off-Broadway, she received Drama Desk, Lortel, and Outer Critics nominations for *Who’s Holiday*, *Emojiland*, and *A Scythe of Time*. Television credits include recurring and guest-starring roles on “Minx,” “Fairly OddParents,” “The Rookie,” “The Crew,” “Raven’s Home,” “Homeland,” “Instinct,” “Seven Seconds,” and “Transparent.” Films include “The Many Saints of Newark,” “Opening Night,” “Boogeyman 2,” and “Number 23.” Lesli’s voice can also be heard on several animated films and shows, including FOX’s “Housebroken,” Disney’s “Cinderella 3,” and Nickelodeon’s “Sponge Bob Squarepants.” Select regional credits include leading roles in *Damn Yankees*, *Guys and Dolls*, *Flamingo Kid*, *Hunchback of Notre Dame*, *Kiss Me, Kate*, *Man of La Mancha*, *Little Shop of Horrors*, and *Spamalot*. Her album “Rule Your Kingdom” is available from Broadway Records. @QueenLesli, Leslimargherita.com



MADLEINE MARQUIS

(Ensemble, u/s Arwen) is thrilled to return to her home state of California for the premiere of *Dark of the Moon*. She

is an alumnus of Carnegie Mellon University School of Music and the Lee Strasberg Institute. Some of her favorite roles over the years have included Alice Beineke in *The Addams Family Musical*, Frosch in *Die Fledermaus*, and Jazz Trio Soprano in *Trouble in Tahiti*. She originated the role of Adriana in the Opera Santa Barbara premiere of *A Séance on a Wet Afternoon* by Stephen Schwartz. As a vocalist, she has been privileged to sing at Carnegie Hall in New York and The Vatican in Rome, and has many years of performing with the Disneyland Candlelight Choir. Madeline sings at numerous NYC piano bars, particularly the historic Duplex Piano Bar, on a weekly basis. She is forever grateful to her mom and dad for their endless love and support, as well as her three younger siblings. She dedicates her performance to her partner Taha, and their family in Morocco. @maddysmms www.madelinemarquis.com



LAURALYN MCCLELLAND

(Ensemble/Dance Captain) is a graduate of Oklahoma City University. Her Broadway credits

include *SpongeBob SquarePants*, *My Fair Lady*, *Sunset Boulevard*, *Matilda*, *Rock of*

Ages, *West Side Story*, and *Grease*. She's toured the U.S., Europe and Asia performing in musicals and resides in NY. Most recently, Lauralyn was seen as Cassie in *A Chorus Line* at Stages St. Louis and Miss Adelaide in *Guys and Dolls* at Sharon Playhouse. You can spot her in the "Rock of Ages" movie, "The Marvelous Mrs. Maisel," and "The SpongeBob Musical: Live on Stage!" She is so grateful to tell stories for a living. Thanks to Chris for the opportunity. @LLmcclell



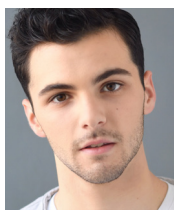
JULIETTE REDDEN
(*Arwen*, *u/s Barbara*) is an actor, French citizen, and pastry snob raised all over the U.S. She is so excited to be

at Rubicon performing in this new incredible show. She recently had the opportunity to play the title role of Anne Shirley in *Anne of Green Gables* at Goodspeed Opera House. She may be heard on the cast album of the same name streaming anywhere you listen to music. Favorite credits include Martha in *Spring Awakening* at Theater Under the Stars and Katherine in *Newsies* at Red Mountain. Thank you to her family, Jake, HCKR agency, Texas State Musical Theater, and everyone here at Rubicon. Socials: @julietteredden



MARK C. REIS
(*Ensemble*, *u/s Preacher Haggler*, *Conjur Man*, *Ralph Wharton*) is proud to be joining Rubicon for the first time in

Dark of the Moon and is excited to be working with this creative team and cast! While living in New York, Mark danced on Broadway in the original company of *Fosse*, and in *The Easter Show* at Radio City Music Hall. National Tours include Chicago (with Charlotte D'Amboise), *Funny Girl* (with Deborah Gibson), and *Jesus Christ Superstar* (with Ted Neeley and Rubicon Co-Founder and *Dark of the Moon* Director Jim O'Neil!). Regionally, Mark has performed with Goodspeed Opera House, Paper Mill Playhouse, Pioneer Theatre Company, TUTS, Tuacahn, Sacramento Music Circus, The Hollywood Bowl, LA Opera, Reprise!, 3D Theatricals, and Music Theatre West. Mark has been seen in Disney's *Frozen Live* at The Hyperion, "The Prom," "BPositive," and more recently with cabaret artist Broadway Barbara Dixon at The Bourbon Room in Hollywood. Mark has written and performed two of his own solo shows, and last year competed in *Best in Drag*, a benefit supporting The Alliance for Housing and Healing. Besides performing, Mark has taught tap at AMDA, and has been a committed certified Bikram Yoga Instructor for 23 years! Most importantly, he has been dedicated to raising his 14-year-old son Bodhi. Mark thanks his friends for their support, help, trust, and faith, and Julie at Go 2 Talent for her encouragement and belief in his ability to continue working in this business!



JAKE DAVID SMITH

(*John the Witch-Boy*) is an actor, musician, and recreational softball third baseman born and raised in Richmond

Virginia. He is beyond thrilled to be developing a new musical here at Rubicon with this incredible team.

Most recently, Jake originated the role of Prince Oliver in the new musical *Between the Lines* off-Broadway and can be heard on the cast album anywhere you stream music. Jake made his Broadway debut in Disney's *Frozen* in the Ensemble understudying the role of Hans. He was featured in the regional premiere of *Escape to Margaritaville* as Tully Mars and has been fortunate enough to play the role of Tony in *West Side Story* multiple times, most recently at The Marriott Theatre in Chicago. Jake thanks Covid safety managers and healthcare workers everywhere for their role in helping live theatre return. He sends his love and gratitude to his family, Juliette, Oozma, Elon Music Theatre, and CGF. Socials: @Jake.David.Smith



SPENCER TY

(*Ensemble, u/s Devin*) was last seen in *The Real Housewives of Troy* (Eclipse Theatre) and is excited and honored to be

working with Rubicon for the first time. Selected credits include *Into the Woods* and *Spring Awakening* (CSU Fullerton), *The Music Man*

and *Mamma Mia!* (5-Star Theatricals), *Alice in Wonderland* (Glendale Centre Theatre), *Annie Get Your Gun* (Candlelight Pavilion), and Disneyland Parades. When he is not on stage, Spencer enjoys cooking and playing board games with his friends and family. For Camp Sandy and Counselor QMK. Love you later and always!



TIMOTHY WARMEN

(*Conjur Man*)

Broadway credits include *Spider-Man: Turn off The Dark* (music - Bono and The Edge) as well as *Dance*

of the Vampires (music - Jim Steinman Meatloaf). Prior to that, he appeared in *Jesus Christ Superstar* (music - Andrew Lloyd Webber). Other Broadway credits include *Jekyll and Hyde* (music - Frank Wildhorn), *Steel Pier* (music - Kander and Ebb). He was also in the original cast of *Sideshow* (music - Henry Krieger of *Dreamgirls*). Before that, Tim played *Wreck* in New York City Opera's *Wonderful Town* at Lincoln Center. Timothy's first Broadway show was *The Who's Tommy* (music - Pete Townsend and The Who - original cast recording Grammy for that year produced by George Martin, The Beatles).



JENNIFER LEIGH WARREN

(*Conjur Woman*) is thrilled to return to Rubicon Theatre having performed here in *Lonesome*

Traveler (and off-Broadway where the show received a Drama Desk Award nomination for Best Musical), *Women Beyond Borders*, *A Christmas Carol*, her one-woman concert “Bassey, Holiday, Simone” and “Lonesome Travelers in Concert.” A critically acclaimed singer/actress, she has been lauded for her theatrical work, from her show-stopping performance as Alice’s Daughter in the original Broadway cast of *Big River* (singing a song written for her by Roger Miller), to originating the role of Crystal in the Alan Menken/Howard Ashman off-Broadway hit *Little Shop of Horrors*, to her performance in the original Broadway cast of *Marie Christine* at Lincoln Center. She is featured on the Grammy Award-nominated original cast albums of these shows and sang “Stranger to the Rain” on the Stephen Schwartz Album. In “Rent: LIVE” on FOX TV, she showcased her acting versatility as Mrs. Jefferson, Mrs. Cohen, Support Sue, and the infamous bag lady. She starred as “The Blues Singer” in all four national tours of *A Night with Janis Joplin* (U.S., Canada) now streaming on Broadway HD.com, and performed her “Diamonds are Forever: The Songs of Shirley Bassey” concert in L.A. On “The Tonight Show,” “Conan” and “Jimmy Kimmel Live!,” she performed with Broken Bells, The Kills, Trombone Shorty, Moon Taxi, Lisa Loeb and OK GO. In Japan, Jennifer re-created her *Big River* role (in Japanese), and she sang in Denmark with Al Jarreau (televised live throughout Europe). AEA, SAG/AFTRA. JenniferLeighWarren.com



TREVOR WHEETMAN

(Trevor) is tickled to be back in Ventura for this production. He first came to Rubicon in 2011 for the premiere of *Lonesome Traveler*.

He met his wife Sylvie Davidson during that run, and they now have been married for eight years and have a beautiful baby boy, Bucky. He owes a lot to this theatre and this town and will say “yes” to anything they offer. Past shows here include *A Christmas Carol*, *Return to the Forbidden Planet*, *I Dig Rock and Roll Music*, *King Lear*, *The Man Who Shot Liberty Valance* and *Lonesome Traveler: Generations*. He lives in Portland, Oregon, where he has a woodshop and a huge garden.



HEATHER YOUMANS

(Katie) is ecstatic to be back in *Dark of the Moon* after playing Saoirse in the 2022 reading here at Rubicon. Her regional

theatre credits include *Hair* (L.A. LGBT Center), *Evita* (PVPA, Dir. Richard Israel), *Annie Get Your Gun*, *The Sound of Music*, and *The Music Man* (Welk Resort), *Annie* (McCoy Rigby, Dir. Glenn Casale), *42nd Street* (Moonlight), *To Kill a Mockingbird* (West Coast Ensemble), *Tight Quarters* (Whitefire Theatre) and *Jason Robert Brown in Concert* (MD Gerald Sternbach, Dir. J Scott Lapp). Heather is part of L.A.’s Troubies comedy group, is the voice of Becky Thatcher in Disney’s “Tom Sawyer’s Island Project” and originated Shana The

ABOUT THE ARTISTS | Cast and Musicians

RUBICON THEATRE COMPANY

DARK OF THE MOON

Rock Star in *Teen Witch the Musical*, based on the '80's film. Heather played the Tap Dancer on the FOX singing show "I Can See Your Voice" (Choreographer Dominique Kelley), opened for Sting and the late Natalie Cole for UNICEF, and sang alongside Clint Black on the "Flicka 2" motion picture soundtrack. She's since shot FOX pilots, been profiled by Forbes Women, and has sung BGVs on NBC telecasts "Macy's 4th of July Spectacular" and "Rockefeller Tree Lighting Ceremony" (behind Gwen Stefani and Blake Shelton) in NYC. When she's not on stage or screen, Heather's a session singer for TV and film for Disney, Netflix, and Hulu, sings for the NHL, MBA, NBA, and was featured in *Newsweek* after her viral TikTok video of an MLB anthem taught people how to sing with stadium delay. Gratitude and thanks to the creative team, cast, crew, Rubicon and Steven Dry. Original music: heatheryoumans.com
IG: [@heatheryoumans](https://www.instagram.com/heatheryoumans)

WHOLE HOG is a Ventura-based bluegrass band that performs timeless hits, eclectic selections from the roots of Americana music. The group's sound blends traditional bluegrass repertoire with Irish, vintage jazz, yodeling, country, western swing, honky tonk, original songwriting and special requests. The band entertains at parties, festivals and corporate events.



SETH ANDREY OSTER (*Guitar/Vocals*) is a contest-winning flatpicker, fingerpicker, singer, yodeler, and buck dancer. He has performed with

Barbara Morrison and John Tchicai at venues such as the Catalina Jazz Club and the Lighthouse. Trained in jazz and classical guitar at Cal State Northridge, the multi-instrumentalist continues to nourish his passion for bluegrass, pre-war blues and gypsy jazz.



CHARLETTA ERB (*Fiddle/Vocals*) is a California State Adult Division Fiddle Champion recognized for her lyrical waltzes and clear tone. A deep

affection for Irish and old-time music permeates her performances. With her Rhonda Vincent-esque vocal quality, spunky stage presence, and soulful harmonies, she's graced the stage at festivals including Parkfield Mother's Day Festival, Great 48, South State 48, Good Old Fashioned, and the Topanga Banjo Fiddle Tailgate Jam.



KEITH FRANKEL (*Banjo*) found his true passion for music as a teenager when he discovered the five-string banjo. Before moving to California, he worked with a

variety of Colorado-based string bands including the Swallow Hill House Band.

In addition to performing, he is an educator and currently teaches at Boulevard Music in Culver City.



COREY HUGH HIGHBERG

(*Standup Bass/Vocals*) began playing upright and electric bass in 1991, studying

music performance at Thousand Oaks High School (class of 95') and professionally for a short period until 2002. He took a break from music and made a return in 2014, where he took

on work as a jazz, Motown, bluegrass, and contemporary artist with several Southern California groups. In 2018, he resumed his college education, earning associate degrees in Music, History, Humanities, Behavioral Science and Liberal Arts at Ventura College, followed by a Bachelor's Degree of Letters and Science in Musicology in 2020 from the University of California, Santa Barbara. He currently writes, researches, composes, teaches, and performs music from his home in Thousand Oaks after completing his Master's Degree in Musicology at California State University of Long Beach in 2023.

OFFSTAGE MUSICIANS

BRENT CRAYON (*Keyboards*) See Musical Director bio under Artistic and Production.

EMILIANO ALMEIDA (*Drums*) is a drummer, percussionist, music producer and DJ who has achieved extraordinary success internationally as a recording artist and live performer. He has worked with established bands and artists from all over the world such as Soledad (Argentina), Vilma Palma e Vampiros (Argentina), Fito Paez (Argentina), Tiziano Ferro (Italy), Sonja Marie (U.S.), Bajofondo Tango Club (U.S., Uruguay, Argentina), film composer Emilio Kauderer (U.S.), Stewart Copeland - The Police (U.S.), Flea - Red Hot Chili Peppers (U.S.), and many more. Emiliano has performed in countless musical theatre productions including *Grease*, *Songs for a New World*, *Godspell*, *Man of La Mancha*, *Mamma Mia!*, *In the Heights* and *Chicago*, just to name a few. He has done composer/producer work for major

video game companies like Ubisoft and EA games. Alongside his busy freelance work, Emiliano also has a solo career as an electronic music producer, combining live drumming and DJing under the name Two Plus. www.mre-drums.com

CARLOS RIVERA (*Electric Bass*) never attended live theatre during his musical upbringing; it now is central to his performing life. He was recently hired as the orchestra contractor at Musical Theatre West for productions of *Hello Dolly*, *Cinderella*, and *Damn Yankees*. In the last year, he opened the new musicals *A Wicked Soul in Cherry Hill*, *Singing Revolution* and *Waiting in the Wings*. Interested in diverse styles of music, Carlos also performs with Desert Symphony, South Coast Symphony, Burbank Philharmonic, Rogue Valley Symphony, and the Bakersfield Symphony. During the day, Carlos teaches double bass exclusively at many schools in Orange County. Most recently he recorded for Beyonce's performance in Dubai.

OLIVER WALTON (*Cello*) is a cellist born and raised in Long Beach, California. He has been playing for 20 years, starting on violin and piano at age 5 taught by his mother violinist/pianist/teacher Jennifer Walton. He started playing cello at age 10 and it became his full-time career by age 15. Oliver graduated from L.A. County High School for the Arts in 2011 and continued his music education at Long Beach City College earning an Associate's Degree in Music. He then studied privately with Dennis Karmazyan and continued to work in the music industry. Oliver has played solo and/or principal cello for shows including *Green Day's American Idiot*, *Les Misérables*, *Candide*, *West Side Story*, *Into the Woods*, *Sweeney Todd*, *Wicked*, *Hands on a Hardbody*, *Evita*, *Damn Yankees*, *Cinderella*, and many others. He has played with orchestras including Pacific Opera Project; Torrance, Downey and West L.A. symphonies; Golden State and Hollywood Pops orchestras; Korean American Youth Symphony Orchestra; Ventura College Orchestra; and many others. He's played shows with EDM artist Deadmau5 Live at the Wiltern Theatre, and Persian Pop Star Shahkar with guest artist Andrea Bocelli at the Dolby Theatre.

LIOR TZEMACH (*Guitar*) is a guitar player/producer from Ramat Gan, Israel. He started his musical career at Thelma Yellin High School of the Arts in the Jazz department

and served in the IDF army bands as a guitarist/arranger. Lior later went to Rimon school of contemporary music, which set him on a path to his studies at Berklee in 2014, majoring in Music Production and Engineering. After getting a bachelor's degree from Berklee, Lior became a part of 20 musicians from all around the world who are in the Berklee Global Jazz Masters' program, studying Jazz performance under artists as Danilo Perez, John Patittuci, and Joe Lovano. He was later hired by Grammy award-winning drummer and composer Terri Lyne Carrington as a guitarist in her band, and since t played a small role as an orchestrator in her recent 2023 Grammy winning album "New Standards Vol. 1". Lior has played in jazz festivals in Monterey, London, St Moritz, and elsewhere.

DAVID CANO (*Violin*) moved to L.A. in 2010, where he has appeared on TV/ film as an on-screen musician and done session work on multiple scores. He's performed in pit orchestras for musicals including *West Side Story*, *Seussical*, *The Pajama Game*, *The King and I*, and *Once Upon a Mattress*. David plays an active role as string contractor/violinist for L.A.-based music entertainment agency Downbeat LA. He's performed countless live events and parties around the world, the most recent being the 74th annual Emmys Governor's Ball. He's recorded music for various artists in multiple genres, including pop, rock, country, jazz, and RnB. David looks forward to expanding his musical repertoire with the premiere of *Dark of the Moon*.

JAMES O'NEIL (*Director/Rubicon Co-Founder and Artistic Director Emeritus*) is the Writer/Director of *Lonesome Traveler: A Journey Down the Rivers and Streams of American Folk* (New York Drama Desk and Outer Critics Circle nominations), which premiered at Rubicon as a co-production with Laguna Playhouse and then transferred to 59E59 Off-Broadway. A concert version of the production toured with special guest Peter Yarrow. Jim's other Rubicon directing credits include *I Dig Rock and Roll Music* (Writer/Director); *King Lear* starring George Ball; *Man of La Mancha*; *Fiddler on the Roof* featuring violin virtuoso Nuvi Mehta as The Fiddler (Indy Award); *Jesus Christ Superstar* starring Ted Neeley and Carl Anderson; the World Premiere of *The Spin Cycle* by David Rambo; *A Delicate Balance* starring Susan Clark, Bonnie Franklin and Amanda McBroom; *The Diary of Anne Frank* starring Lauren Patten, Bruce Weitz and Alison Brie (Indy Award); *The Night of the Iguana* starring Stephanie Zimbalist and Efrem Zimbalist, Jr.; *A Streetcar Named Desire* starring Linda Purl and Eric Lange (Indy Award); *Driving Miss Daisy* starring Michael Learned (NAACP Award - Best Direction of a Play); *All My Sons* (L.A. Ovation Award - Best Production of a Play); *Sylvia* starring Kristi Lynes and Joe Spano; and *Gem of the Ocean* starring Lillias White, Tony Haney and Chris Butler. Under Jim's artistic leadership, Rubicon accepted

the 2011-12 New York Drama Desk Award for *The Best is Yet to Come: The Music of Cy Coleman*, conceived and directed by David Zippel and starring Lillias White, Billy Stritch, Howard McGillin, David Burnham, Rachel York and Sally Mayes. Other directing credits include *The Lion in Winter*, *The Petrified Forest*, *Inherit the Wind* and regional premieres of *A Coupla' White Chicks Sitting Around Talking*, and *The Mystery of Edwin Drood* starring Barry Dennen. While on staff at Landmark Entertainment Group, Jim directed a multi-million-dollar animatronics/special effects show in Japan, supervising all aspects of production and creative direction for themed attractions in Sanrio's Harmonyland. As an actor, Jim's Rubicon credits include the title role in *Clarence Darrow*, Dr. Prospero in *Return to the Forbidden Planet*, Claudius in *Hamlet*, the Stage Manager in *Our Town*, Michael in *Dancing at Lughnasa*, and multiple roles in *The Turn of the Screw*. He appeared for two years as Pontius Pilate in the National Tour of *Jesus Christ Superstar* starring Ted Neeley, Carl Anderson and Irene Cara. Regional credits include John Adams in *1776*, The Duke/Dr. Carrasco in *Man of La Mancha*, and Adam in the first workshop of Dale Wasserman's *Western Star*. Jim may be heard singing the title role in "Quasimodo: Prince of Fools" and as Tsar Nicholas in "Rasputin," concept albums written by Michael Rapp.

CHRISTOPHER GATELLI

(*Choreographer*) most recently received a 2022 Emmy Award nomination for

Outstanding Choreography for the Apple TV+ series “Schmigadoon!” Chris received the 2012 Tony, Drama Desk, and Outer Critics Circle Awards for his choreography of *Newsies*. Additional Broadway choreography credits include *The King and I* (Tony Award nomination), *SpongeBob the Musical* (Tony Award nomination), *My Fair Lady* (Tony Award nomination), *South Pacific* (Tony and Outer Critics Circle Award nominations), *Sunday in the Park with George*, *Women on the Verge of a Nervous Breakdown*, *Casa Valentina*, *Amazing Grace*, *Godspell*, *The Ritz*, *Martin Short: Fame Becomes Me*, *13*, and *High Fidelity*. Christopher choreographed the Coen brothers’ film “Hail, Caesar!,” “Isn’t It Romantic?,” and the upcoming Netflix animated feature film “The Monkey King.” Other television: “Miracle Workers 3,” “Bupkis,” and resident at “The Rosie O’Donnell Show.” Christopher directed and choreographed *Silence! The Musical* off-Broadway (named one of TIME Magazine’s top 10 Plays and Musicals of 2011), the world premiere of Jim Henson’s *Emmet Otter’s Jug-Band Christmas* (New Victory), *Departure Lounge* (The Public Theater) and *In Your Arms* (New York Stage and Film and The Old Globe). Other off-Broadway credits include *Altar Boyz* (Lucille Lortel and Calloway Awards) *Bat Boy: The Musical* (Lucille Lortel Award), and *tick, tick...BOOM!* (also at Rubicon and the Coronet in L.A.)

MARK MYARS (*Associate Choreographer/Additional Musical Staging*) is currently the Associate Choreographer of *Dear Evan Hansen*. He was the Associate Choreographer on the Broadway productions of *The Cher Show*, *My Fair Lady* (also National Tour), *SpongeBob Squarepants*, *War Paint*, and *If/Then* (also National Tour). His West End Associate credits include *My Fair Lady*, *Dear Evan Hansen*, and *Wicked*. Mark was the International Dance Supervisor of *Wicked*. He has been seen onstage on Broadway in *West Side Story*, *Come Fly Away*, *9 to 5*, *Wicked*, and *Footloose*. His onscreen work includes the films “Isn’t it Romantic?,” “Rock of Ages,” “Winter’s Tale,” “The Producers,” “Across the Universe,” “Life of an Actress,” and “Centerstage,” as well as upcoming TV episodes of “Bupkis” and “Feud.” Mark is a Guest Musical Theatre Teacher at Broadway Dance Center and STEPS in New York City, where he resides.

BRAD HAAK (*Musical Supervisor, Vocal Arranger and Additional Orchestrations*) has had a career spanning the theatrical, concert, and recording worlds. He has contributed to the creation of over 50 new musicals in New York City, at regional theatres the U.S., and in London, Toronto and Tokyo. Brad music directed and conducted four Broadway productions including Disney’s *Mary Poppins* and *An American in Paris*, and played piano for *The Phantom of the Opera*, *The Full Monty*, and *Dirty Rotten Scoundrels*. Brad has been a conductor on national tours of

Miss Saigon and Disney's *The Lion King* and has music direction and orchestration credits at numerous U.S. regional theatres and arts organizations including Chicago Shakespeare Theatre, The MUNY in St. Louis, The Old Globe in San Diego, and the Kennedy Center for the Performing Arts. He has orchestrated for U.S. symphony orchestras including the New York Pops Orchestra and the L.A. Philharmonic, shared the concert stage with such stars as Audra McDonald and Paul McCartney, and coached numerous Broadway performers and recording artists such as Beyoncé. Brad's international credits include numerous collaborations with director John Caird on his Japanese productions (most recently the acclaimed stage adaptation of Hayao Miyazaki's beloved *Spirited Away* as well as Caird's and composer Paul Gordon's Broadway adaptation of *Jane Eyre*.) Brad is a graduate of Northwestern University and now calls Chicago home.

DILLON KONDOR (*Orchestrations*) is a guitarist and composer in NYC. His TV/film credits include "Jesus Christ Superstar" Live on NBC (with John Legend and Sara Bareilles), Kennedy Center Honors with the cast of *Hamilton* in 2018, "The Marvelous Mrs. Maisel," "Schmigadoon," "Fosse/Verdon," "Only Murders in the Building," "tick tick...BOOM!," "Spirited,"

"Vivo," "Dear Evan Hansen," and "Lyle Lyle Crocodile." He also toured as the guitarist for Blood Sweat and Tears from 2014-2017. Dillon studied at Ithaca College and the Manhattan School of Music, where he focused on Avant Garde concert music. Eager for a return to more accessible, popular forms of music, he began working as a guitarist on Broadway shows while also writing, performing, and recording his own work. *Dark of the Moon* is Dillon's debut as a theatre orchestrator.

BRENT CRAYON (*Music Director/ Keyboards*) is a music director and pianist based in L.A. He has collaborated with many notable artists such as Stephen Schwartz, Jason Robert Brown, Daisy Prince, John Caird, Paul Gordon, Richard Maltby, Jr., and John Bucchino. Favorite theatrical productions include the West Coast premieres of *First Date*, *Songs for a New World*, and *tick, tick...BOOM!*, as well as the world premiere productions of Stephen Schwartz's *Snapshots* and John Bucchino's *It's Only Life*. Brent can be seen and heard in McCoy Rigby's production of *A Night with Janis Joplin* streaming on Broadway HD. Brent is thrilled to be back at Rubicon!

MIKE BILLINGS (*Set Designer*) returns to Rubicon after designing *Almost Maine*, *Big River*, *Heisenberg*, *South Pacific*, *Return to the Forbidden Planet*, *Buyer and Cellar*, *A Christmas Carol*, *Incognito*, *Gulf View Drive* (Ovation Nomination), *Sylvia*, *See Rock City* (Ovation Nominations), *Copenhagen*,

ABOUT THE ARTISTS | Artistic and Production

RUBICON THEATRE COMPANY

DARK OF THE MOON

Last Train to Nibroc, The Last Five Years, and Conviction. Recently Mike designed the West End production of Dreamworks' *The Prince of Egypt* at the Dominion Theatre, and also the internationally touring exhibitions of Downton Abbey and Harry Potter: The Exhibition. He has designed for the Bay Street Theater, Laguna Playhouse, American Theatre for Actors, Guild Hall, Gallery Players, Abingdon Theatre Company, Bated Breath Theatre, Quintessence Theatre, Spirit of Broadway Theatre, Connecticut Repertory Theatre, Dorset Theatre Festival, and Busch Gardens Theme Park in Williamsburg, VA. Mike holds a B.F.A. from the University of Connecticut and is a member of United Scenic Artists Local USA 829. www.mikebillingsdesign.com IG: @mikebillingsdesign

ANDREW SCHMEDAKE (*Lighting/Projection Designer*) is an award-winning technical director and lighting designer for the arts and live entertainment, both in-person and virtual. Recent credits include activations for "Black Adam," Billie Eilish, Olivia Rodrigo, Cynthia Erivo, Disney+, WarnerMedia, Netflix, Amazon and Blumhouse through Little Cinema Digital; designs for Center Theatre Group, South Coast Repertory, Gabriel Iglesias, After Hours Theatre Company, and Antaeus Theatre Company. Previously, Andrew designed lights for *Ain't Misbehavin'* at Rubicon. He is the recipient of a Clio Award (with Little Cinema), is a three-time L.A. Stage Alliance Ovation

Award recipient, a two-time LA Drama Critics Circle Award-winner and an NAACP Theatre Award-winner. Andrew holds an M.F.A. from Carnegie Mellon University.

JONATHAN BURKE (*Sound Designer*) is an L.A.-based sound designer and mixer for theatre, opera and live events. Originally from Cambridge, England, Jonathan came to the United States by way of Hong Kong. He was the resident sound designer for two seasons at Pittsburgh's City Theater Company before moving to L.A. where he lives with his wife and two children. Recent highlights include design and mix of *Kinky Boots* at the Hollywood Bowl, *On Gold Mountain* produced by LA Opera and staged outdoors at the Huntingdon Gardens. And associate design and mix of the tour ...*Iphigenia* by Wayne Shorter and Esperanza Spalding. In 2021, Jonathan created an immersive outdoor sound design for the Cincinnati Opera "Summer at Summit" season of 3 operas. Rubicon favorites include *The Best is Yet to Come, Daddy Long Legs, Big River, and Lonesome Traveler.* In addition to designing, Jonathan teaches Sound Design at UCLA School of Theater, Film and Television. He is a member of US 829 and TSDCA and serves on the application and education committees for both. www.jonathanburkesounddesign.com

DANNY FIANDACA (*Associate Sound Designer*) served as Assistant/Associate sound designer to Peter McBoyle for ten years on productions across the United States, Asia as well as on Broadway

(Twyla Tharp's "Come Fly Away"). Danny was the sound designer on all of the musical theatre productions for Princess Cruises between 2010 and 2020. During this time, he collaborated with Stephen Schwartz and his talented network of directors and musical directors as well as the Jim Henson company on multiple staged productions. Some of his favorite credits include *A Word or Two* (Christopher Plummer/Ahmanson Theatre), *Sister Act* (Troika Entertainment), *The Secret Silk* (Stephen Schwartz/Princess Cruises), *Henson Inspired Silliness* (Jim Henson Company/Princess Cruises), *Fantastic Journey* (THEA Award - Princess Cruises), *Once - Enchanted Storybook* (Vinpearl Land, Phu Quoc, Vietnam) and *In the Heights* here at Rubicon.

PAMELA SHAW (*Costume Designer*) returns to Rubicon having previously designed productions of *The Forbidden Planet*, *Fuddy Meers*, *South Pacific* and *Lonesome Traveler*, which transferred off-Broadway. She is resident costume designer for The Theatre Group at SBCC, recently designing *The Play that Goes Wrong*, *Something Rotten!*, *Murder on the Orient Express*, *Ripcord*, *The Thin Man*, *Looking Back*, *Looking Forward*, *Sense & Sensibility*, *How to Succeed in Business Without Really Trying*, *The Game's Afoot*, *Grease*, *One Man, Two Guvnors* and *Significant Other*, among many other productions. For PCPA, her credits include *The Book of Will*, *The Curious Case of the Watson*

Intelligence and the premiere of *San Patricios*. She is Assistant Costume Designer for the TV sensation *Vampire Diaries*. From 2017-2023, Pam has been Chair for the Western Region Board of United Scenic Artists, Local 829.

ALEX CHOATE (*Props and Furniture Designer*) has been designing and building props for the last 18 years. From simple benches to superhero costumes for film and television, nothing is too large or too small. Notable credits are specialty costumes for "Titans," "Doom Patrol," "Stargirl," "Black Lightning," "The Boys," and theatrical designs for *The 50 Year Sword*, *I Gelosi*, *Coronado* and *The Diary of Anne Frank*. This production marks Alex's first time with the Rubicon, and he hopes to return to bring you what he has to offer for your enjoyment.

PHIL GOLD (*Production Stage Manager*) is happy to return to Rubicon Theatre with *Dark of the Moon* so soon after his recent company debut stage managing *The Realistic Joneses*. Before the Rubicon, Phil stage managed the world premiere of a new play by Rupert Holmes, *All Things Equal*, which premiered at FreeFall Theatre in St. Petersburg, FL and immediately moved to Bay Street Theater in Sag Harbor, NY. Phil's touring productions as stage manager include *Soul Doctor* (International Tour's San Diego run) and *Sisterella* (European Tour). Just prior to the pandemic, Phil made his off-Broadway stage managing debut with *Miss America's Ugly Daughter*. Southern California regional stage management credits include *A Wicked Soul in Cherry*

Hill (Geffen Playhouse); *A Grand Night for Singing* and *Forever Plaid 30th Anniversary Reunion Concerts* (Musical Theatre West); *Tevey in New York!* (The Wallis); *You Can't Make This Sh*t Up* (Saban Theater); *Rex & Bob's Excellent Misadventure* (Glendale Center Theatre); *The Wonderful Winter of Oz* and *A Cinderella Christmas* (Lythgoe Family Panto); *In a Booth at Chasen's* (El Portal); *Dirty Blonde, The Cocktail Hour*, and *Love, Loss and What I Wore* (Coyote StageWorks); *Hold These Truths* and *Smokey Joe's Café* (Pasadena Playhouse); *I Only Have Eyes for You* (The Montalbán); *Billy Elliot, Les Misérables*, and *Next to Normal* (McCoy Rigby Entertainment); and *Forever Plaid* (Cabrillo Music Theatre), among others. In the world of opera, Phil has stage managed *Carmen* and *Blue* (Pittsburgh Opera) and *A Midsummer Night's Dream* and *Ainadamar* (USC's Thornton School of Music).

PATRICK VEST (*Fight Choreographer*) received his M.F.A. in acting from the Alabama Shakespeare Festival. He was recently seen in *Almost, Maine* here at Rubicon, for which he was also the fight choreographer. He also choreographed *Never Not Once, Sylvia* and *Incognito*, all at Rubicon. Patrick has also acted, directed, and staged fights with Shakespeare by the Sea since 2002.

JOEL GOLDES (*Dialect Consultant*) has worked extensively in theatre and film. Credits include *Come From Away* (Broadway, North American Tour, all English-speaking companies worldwide and Apple TV+); *The Secret Garden, 2:22: A Ghost Story, Soft Power, Sweat, Immediate Family*, and *Tribes for Center Theatre Group*; and *Memphis, The Cosmonaut's Last Message... and Going to St. Ives* for La Jolla Playhouse. For Pasadena Playhouse, he coached *Orson's Shadow* and *Mask*. Some of Joel's many film and television credits include "The Woman King," "Washington Black," "The First Lady," "The Shrink Next Door," "24," "Escape at Dannemora," "Jingle Jangle," "The Company Men," "The Crazy Ones," (for which he coached Robin Williams), and "Hatfields & McCoys," for which client Kevin Cosntner won the Best Actor Emmy. *TheDialectCoach.com*.

MADISON CHMIELEWSKI (*Assistant Stage Manager*) is a recent graduate from the School of Theater, Film, & Television where she majored in Theater with a focus in Stage Management. Credits include *The Women of Zalongo* (Cal State Fullerton), *Robin Hood & Maid Marion: A Holiday Panto* (Laguna Playhouse), as well as the AFI Film Festival and the Independent Spirit Awards. She thanks her friends and family for their love and support.



KARYL LYNN BURNS (*Producing Artistic Director*) founded Rubicon with husband James O'Neil in 1998, and has overseen more than 140 productions for the company, including the World Premieres of *23.5 Hours/Conviction* by Carey Crim (a co-production with Bay Street Theater in Sag Harbor and the Royal Manitoba Theatre Centre), *Daddy Long Legs* (which has traveled to 15 U.S. cities and 4 countries and is now licensed by MTL), *The Best is Yet to Come: The Music of Cy Coleman* (NY Drama Desk Award), *Lonesome Traveler* (Drama Desk and Outer Critics Circle nominations), *My Antonia* adapted and directed by Scott Schwartz with music by Steven Schwartz, *It's Only Life* by John Bucchino directed by Daisy Prince, and *Hello! My Baby* by Cheri Steinkellner. Karyl Lynn joined Daryl Roth as Producer of *Wiesenthal* by Tom Dugan, directed by Jenny Sullivan off-Broadway (Drama Desk and Outer Critics Circle nominations). She also produced the West Coast BeckettFest, which brought international artists to Ventura for a month-long celebration of the works of Samuel Beckett. For over a decade prior to starting Rubicon, Karyl Lynn was CEO of State of the Arts, an arts marketing and management firm. Clients included Ventura Music Festival, New West Symphony, Ensemble Theatre Company, PCPA Theaterfest, Theatre League, Broadway Producer Normand Kurtz, and Tony Award-winning playwright Dale Wasserman.

Karyl Lynn worked with students from Oak Meadow School who received the United Nations "Global 500" Award for their work on environmental issues. For The Dream Foundation, she produced a PSA directed by Mimi Leder and starring Jeff Bridges. As an event planner, Karyl Lynn and her staff coordinated the 10th Annual "Cool Comedy, Hot Cuisine" with Robin Williams, Howie Mandel and Bob Saget, emceed by Bob Costas; a concert for Scleroderma Research with singer Sheryl Crow at the Santa Barbara Bowl; and several charity film premieres. For Capps for Congress, she managed a 400-person luncheon with Hillary Clinton as keynote speaker. Karyl Lynn is also an award-winning actor and sound designer.

STEPHANIE A. COLTRIN (*Associate Producer*) is an award-winning producer and director with over 200 productions to her credit, ranging from musicals to Shakespeare to World Premieres, from comedies to dramas. Directing credits include *Buyer and Cellar*, *Taking Sides*, *Sylvia*, *Moonlight and Magnolias*, the Ovation-recommended production of *The Last Five Years* for Rubicon Theatre. Stephanie was the Artistic Director of CLO of South Bay Cities and the Hermosa Beach Playhouse, helming a ten-show season at both venues, and directing productions including *Miss Saigon* (Ovation winner for Best Musical, earning her a directing nomination), *Seussical the Musical* (Broadway World Award for Best Director), *Jesus Christ Superstar* (Stage Scene L.A. Award, Director), *Oklahoma, Bark!*, *She*

Loves Me and *The 1940's Radio Hour*. Other directing credits include *A Midsummer Night's Dream*, *The Taming of the Shrew*, *Godspell*, *Barefoot in the Park*, *Who's Afraid of Virginia Woolf?*, *Private Lives*, *Steel Magnolias*, *Blithe Spirit*, *Art*, *The Green Room* (world premiere), *Moonlight and Magnolias*, *Come Back to the Five and Dime...*, *Sylvia*, *Quilters* and others. She is also Co-Artistic Director for Shakespeare by the Sea (a summer Shakespeare festival touring two shows in rep to more than 24 locations throughout Southern California), having directed *Henry V*, *The Winter's Tale*, *Macbeth*, *Othello*, *Hamlet*, *The Tempest*, *Julius Caesar*, *King Lear*, *Romeo and Juliet*, *King John* and will this summer be directing *Henry V*. For her work with SBTS, Stephanie was interviewed on PBS as well as for a Folger Shakespeare Library podcast. www.stephaniecoltrin.com

DAVID ELZER (*Publicist*), in addition to representing Rubicon, works with Actors Co-op, Celebration Theatre, Circle X Theatre Company, The Colony Theatre Company, Five-Star Theatricals, Independent Shakespeare Co., The Laguna Playhouse, La Mirada Theatre for the Performing Arts, NoHo Arts Center Ensemble, Ojai Playwrights Conference, Open Fist Theatre Company, Road Theatre Company, Theatre of NOTE, Theatre Tribe and VS. Theatre Company. As a producer, he has twice won the L.A. Drama Critics Circle Award and was also honored to receive the Circle's prestigious Joel Hirschhorn Award for Outstanding Achievement in Musical Theatre. David has been nominated for six Ovation Awards (winning two), and

has also won Drama Desk, L.A. Weekly, and Garland Awards for his producing and writing efforts. His most recent productions include the Celebration Theatre productions of *Justin Love*, which he conceived, commissioned and co-wrote, and *The Color Purple*. He also produced the World Premiere musical *Having It All* at the NoHo Arts Center and The Laguna Playhouse, the World Premiere play *Girls Talk* starring Brooke Shields, the record breaking, 19-month run of *The Marvelous Wonderettes* and *Winter Wonderettes* at the El Portal Forum Theatre, and the smash-hit *Life Could Be a Dream*, which ran for a year at the Hudson Mainstage in Hollywood.

WITZEND PRODUCTIONS was founded by Michael Jackowitz and Jeffrey Grove in 2012 to develop new works for the theatre. In addition to supporting *Dark of the Moon*, the company is currently developing *Hawaiian Goddess* for a Honolulu production in 2024. Broadway projects include *Some Like it Hot*, *A Beautiful Noise*, *The Neil Diamond Musical*, *Once on This Island* (Tony Award, Best Revival), *Tuck Everlasting*, *Diana*, *Lifespan of a Fact*, *Escape to Margaritaville* and *How to Succeed in Business* (Tony Nominee Best Revival). Other projects include *Daddy Long Legs* (Off-Broadway), and *Seance on a Wet Afternoon* (Opera Santa Barbara and Lincoln Center). The company's Digital Theatre Division has produced "Estella Scrooge" by John Caird and Paul Gordon (Telly Award for Best Film), and "1660 Vine" by Jackson Prince (Indie Fest Winner: Best of Show/New York International Film Awards: Best Musical Film). Michael has been honored to be Director of New Works at Rubicon since 2006, bringing many projects to Rubicon stages including *Daddy Long Legs*, *The*

Best is Yet to Come: The Music of Cy Coleman (Drama Desk Outstanding Review), *My Antonia, It's Only Life and tick, tick...BOOM!* Other WitzEnd partners: Marvin Kahan, Kevin Surace, Laura Dean Koch, Anne Towbes and Ronnie Jacobson.

PULSE PRODUCTIONS is thrilled to support our first musical stage show. Partners include Gene DiBetta, Awais Baig and Jeffrey Grove. Credits include the WitzEnd Digital Theatre Fund including "1660 Vine" (Indie Fest: Winner/New York International Film Awards: Winner Best Musical Film and Grand Jury Award).

THE TRUST: The original authors of *Dark of the Moon* Howard D. Richardson and William Berney were the joint owners of the Work. Upon the death of William Berney in 1961, his 50% interest was bequeathed to Howard Richardson as a life estate; and upon Howard's death, the Berney 50% interest was bequeathed to Yale University as the remainderman of such interest. After Howard Richardson's death in 1984, Elliot S. Blair, Esq., as executor of Howard's estate and Trustee of the Howard Richardson Literary Property Trust, negotiated with the representatives of Yale University and, as a result, formed the entity entitled The Richardson Yale Property Trust, naming Elliot S. Blair, Esq., as Administrator of the Trust. The Howard Richardson Literary Property Trust and Yale University now constitute the joint proprietors of the Work.

ELLIOT S. BLAIR, ESQ., an attorney in New York City, has been licensed to practice law in New York since 1960. After serving as an officer in JAG, writing briefs for the Secretary of the Army

and the Judge Advocate General with regard to matters under the Federal Tort Claims Act, Mr. Blair started in private practice in 1963. The field of endeavor practiced by Mr. Blair specialized in agreements between authors of literary works and producers, distributors and entities engaged in motion picture production and distribution and with legitimate stage producers, and in addition, Mr. Blair processed matters involving copyright issues. Mr. Blair has engaged in matters for various estates of noteworthy authors, including Cornell Woolrich (i.e. *Rear Window*), Damon Runyan (i.e. *Guys and Dolls*), Maurine Dallas Watkins (i.e. *Chicago*), and Shirley Jackson (i.e. *The Haunting of Hill House*). Mr. Blair also represented American Play Company (APC) and its successor. APC was owned by Sheldon Abend who initiated litigation against MCA and James Stewart ("Abend v. MCA, Universal and Stewart") with respect to the right to exploit the motion picture "Rear Window" which was decided by the United States Supreme Court and resulted in a landmark 6 to 3 decision in favor of Abend ruling that exhibition of the film by defendants violated the United States Copyright Act. Subsequently, rights to "Rear Window" were again secured by Universal.

AMERICAN PLAY COMPANY and its predecessor, was formed in the late 19th century and the list of its dramatists reflects a significantly notable portion of the literary community, including Galsworthy, Wilde, Kern, Cohan, Shaw, Maugham, Williams, Wodehouse, Kaufman, Hecht, Belasco, Hart, Hammerstein, Fitch, Gordon, Luce, Bolton, Barrie, and numerous others.



Passion Flowers

805.641.1076

passionflowersventura.com

920 East Main Street, Ventura, CA 93001

WHOLE HOG

Now Booking:

FESTIVALS

CONCERTS

WEDDINGS

PRIVATE PARTIES

CORPORATE EVENTS



WHOLEHOGBAND.COM

WHOLEHOGBAND@GMAIL.COM

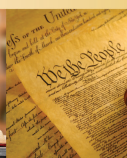
+

(805) 464-6175

Auto Accidents
Motorcycle Accidents
Bankruptcy, Chapter 13
Bankruptcy, Chapter 7
Dog Bite Injuries

RLF Law Offices of Richard L. Francis
and associates, p.c.

Juan Gonzalez
Executive Administrator



Labor Law
Real Estate Brokers
Real Estate & Environmental Law
Trust & Probate
Wrongful Death
Slip & Fall
711 S A St, Oxnard, CA 93030

www.lawrlf.com

Call
(805) 485-8888

Before it's too late!

SHOP AT THE WHARF!

WE HAVE SOMETHING FOR EVERYONE



THE WHARF
VENTURA, CALIFORNIA



- CASUAL WEAR • WORK WEAR • FOOTWEAR & BOOTS
- GIFTS • SADDLERY • FEED • PET SUPPLIES

980 FRONT STREET | VENTURA, CA 93001 | (805) 648-5037 | www.thewharfonline.com

2022–2023 BOARD OF DIRECTORS

RUBICON THEATRE COMPANY

DARK OF THE MOON

Officers

DOUG HALTER

President

Owner

Halter-Encinas Enterprises

JEANNE P. ADAMS, Ph.D.

Vice President

Professor/Educational

Consultant

STEPHANIE ZIERHUT

Secretary/Treasurer

Retired Educator

Members-at-Large

CLAIRE BOWMAN

Retired Educator/Owner

Ripple Property Management

KEVIN SURACE

Producer/Entrepreneur

CTO, Appvance

JEFFREY S. GROVE

D.O., FACP dist.

Suncoast Family Medical Associates

MICHAEL JACKOWITZ

Producer

Witzend Productions

BRAD SETSER

Consultant

Former VP/Head of Global Marketing

Yardi Systems Inc.

Ex Officio

ROBERT M. BERGER

Legal Advisor



LAW OFFICES OF ROBERT M. BERGER

For over 30 years, LORMB has been providing quality legal representation.

Offices:

260 Maple Court,
Suite 119, Ventura, CA
805-658-0998

16830 Ventura Blvd.,
Suite 500, Encino, CA
818-385-1770

- Estate Planning
- Probate and Trust Administration
- Non-Profit Corporations
- Business Law

rberger@rmbergerlaw.com | www.rmbergerlaw.com

2022–2023 BOARD OF ADVISORS

RUBICON THEATRE COMPANY

DARK OF THE MOON

SHELLY BRAUN, Chair

Community Volunteer

SUSAN CLARK

Actor/Producer

HARRIET CLUNE

*Retired Real Estate Broker/Manager
Coldwell Banker*

CYNTHIA FERRELL

Writer

REBECCA FOX

Retired Educator

NANCY BUTLER FRANCIS

Retired Land Use Planner

BETTY M. HARRIS

Retired Educator

MYRON HARRISON

CEO

Harrison Industries/E.J. Harrison and Sons

MARILYN HILTON

Retired International Educator

KATHIE HIRA

*Property Owner and Manager
Douglas Center Partners, LLC*

NANCY ISRAEL

Community Volunteer

JIM LANUM

*Retired Business Owner/Founder
Gigavac*

TRACY LONG, Ph.D.

*Research Fellow
Institute for Social Innovation*

STUART MCDANIEL

*Retired Principal Public Events Manager,
Dept. of Dramatic Arts and Dance
University of California, Santa Barbara*

ROSA LEE MEASURES

*Real Estate and Investment Manager/
Former Deputy Mayor
City of San Buenaventura*

BARBARA MEISTER

Retired Educator

EILEEN OGLE

Retired Businesswoman

KAY RICH

*Retired Educator
Community Volunteer*

BECKY SNYDER

Retired Respiratory Therapist

STEVEN SNYDER

*Real Estate Sales and Property
Oaktree Property Management*

LANE STALBIRD

*Semi-Retired Business Systems
Consultant*

RICH STEWART

*Retired Mortgage Lender
Washington Mutual Bank*

SUSAN VAN ABEL

Community Volunteer

THE COTTAGES AT VENTURA ARE PLEASED TO HOST THE ACTORS OF RUBICON THEATRE



TWO SHORT-TERM VACATION RENTALS IN THE HEART OF
MIDTOWN VENTURA

Call Dana: (661) 904-7430

Mention you found us here and a portion of your stay will be donated to
Rubicon Theatre to support the arts!

MOROCCAN BEACH RETREAT

Relax at this peaceful Mandalay Beach retreat. The perfect place
to reconnect with your family and friends. Or spend time working
remotely at your own beach retreat. Walk a few steps to the sand.

Cuddle in front of the hearth fireplace. Catch up with your fav
streaming series. Learn how to surf. Finally. Your own beach home.



CONTACT
Brenda Rothaupt
Email: profbrendi@gmail.com
Phone: +18182741700



The listing below reflects gifts received from March 1, 2022 - March 1, 2023. To make a donation, or to notify us regarding any errors or omissions, please contact Araceli Gonzalez Aggarwal, Development Associate, at 805.667.2912, ext. 246, or e-mail her at aaggarwal@rubicontheatre.org.

\$50,000+

Jeanne Adams, Ph.D.
Mary Ann Cohen

Barbara Meister

\$10,000 - \$49,999

Anonymous
Karyl Lynn Burns and James O'Neil
City of San Buenaventura
Freddie Contarino
Nancy and Richard Francis
Jeffrey and Gerald Grove
Jordan Laby
Jack Oakie & Victoria Horne Oakie
Charitable Foundation
Lena and Jim Lanum

Jody Legendre
Loretta and Mike Merewether*
Judith R. Nelson
Eileen Ogle
Susan Van Abel and Eric Oltmann
Thomas Pecht
Lori and Dr. Richard Reisman
Darrel Schultz
Becky and Steven Snyder
Anne Smith Towbes

\$1,000 - \$9,999

Anonymous
Joanie and Dr. Moustapha Abou-Samra
Norma Beck
The Benevity Community Impact Fund
Claire and Reid Bowman
Donna Burger
Ginger and Kim Caldwell
The Caplin Foundation
Bonnie and Don Carlton
Susan Clark
Carol and Robert Cole
Barbra Conway
Frances Elson

Randy Encinas and Doug Halter
Linda Kay Fisher
Abra and Ed Flores
Judith Friedman
Karen Fritts and John Shwope
Judi and Manny Garcia
Renee and Mark Garrett
Lynn and Al Geller
Gene Haas Foundation
Rosalind and Richard Goldstein
Mary and Jim Harrison
Genevieve and Tom Hinkle
J. William and Elizabeth S. Robinson
Foundation, Inc.

DONORS

RUBICON THEATRE COMPANY

DARK OF THE MOON

\$1,000 – \$9,999 (cont.)

Marilyn Juday	Lainey and Dan Scully
Julius Guis Memorial Rotary Foundation	The Sence Foundation
Marji Knowles	Diana Troik and Art Shaffman
Sandra and Neal Lassila	Jody Shapiro
Law Offices of Richard L. Francis & Associates	Nancy Sieh
Irene Lawler	Rebecca and Jeffrey Smith
Limoneira Foundation Fund*	Lane Stalbird
Tracy Long	Kevin Surace
Jeannette and Dennis Longwill	Adela and Ken Trainor
Michael Mance	Ventura County Community Foundation
Rosa Lee Measures	Beverly and Kirby Ward
Morgan Stanley GIFT Fund	Laurie and Steven Weiss
Mike Powers	Jo Beth Williams
Nancy Rasmussen and William Wayson	Marilyn Winch
Kay and Jerry Rich	Stephanie and Kurt Zierhut
Paula and Scott Rushing	Leah and Jim Zondlo
Susan and Louis Samonsky	
Mary Schaeffer	

\$100 – \$999

Anonymous	Josefina Boner
Judy and Joel Adelman	Theresa Brenner-Farrell
Raul Alvarado	Bonnie Hellman Brown and Buzz Brown
Denisse Ambert	Donn Browne
Anonymous	Colleen Bruns
Patricia and Ross Atkinson	Dianna Burdick
Catherine and John Baker	Patricia Butler
Richard Baldwin	Doris Capra
Jill and Edward Banman	Gary Carlton
Penelope Barnds	Antonio Casares
Victoria Basolo	Kim and Bobby Castagna
Donna and Gerald Beatty	Peter Chapa
Larry Behrens	Linda Chatenever
Robert Benham	Wietz Chatenever
Jane Berg	Ruth Cirillo
Gary Best	Harriet Clune
Dell and Paul Bishop	Shelley and David Cole
Sally and Bruce Bishop	Melinda Dannenberg
Russell Black	Dorothy and Gary Davis
Ruth Blystone	Deborah De Smeth

**Administered by the Ventura County Community Foundation*

\$100 – \$999 (cont.)

Barbara Dean
 Michelle and Matthew Demaria
 Diane Dowler
 Leonard Dryer
 Judy Dugan
 Robert Dugan
 Lorraine Ebdon
 Wanda Edwards
 Lynda and Fred Evans
 Paula Feinberg
 Karen and Paul Finkel
 Lois and Roy Fischman
 Judith and Mark Fleischman
 Karen Flock and Daniel Long
 Terrence Foley
 Tony Fowkes
 Rebecca Fox
 David Fuhrmann
 Cynthia Garcia
 Clarissa and Bill Garlington
 Joyce Gelsing
 Susan and Mark Ghilarducci
 Gregory Gore
 Jeannie and Rick Graham
 Stephanie Greger
 Rozanne and Randy Haege
 Julia Hamann
 Lori and Gregory Harris
 Sharon and Myron Harrison
 John Hawkes
 Deanna Hehl
 Daniel Hermelin
 Barbara and Larry Hilburn
 Marilyn Hilton
 Kathie Hira
 Linda Hitt
 Melita Hoffman
 Charlotte Hoyt
 Diane and Clark Hubbard
 Martha Jaffe
 Jennifer Jannone and John Edwards
 Ruth Johnson
 Robert Gibson Johnson
 Lisa Kadowaki
 Alan Keevy
 Linda Kerns
 Judy Kerr
 Patrice Kilby
 Elizabeth Kinney
 Alan Kirschbaum
 Wendy Lieb and Ronald Kopp
 Jean Kraebel
 Ronald Kramar
 Carol Kucera
 Carol Lande
 Sharon Landecker
 Haady Lashkari
 Edward Lay
 Harriet and Eric Leibovitch
 Kay Liddi
 Nancy and Ronald Lindsay
 Amanda McBroom and George Ball
 Jennifer Macafee
 Christine and Paul Magie
 Valerie Magro
 Paula Markgraf
 Manuel Marquez
 Frances and Jack Marshall
 L. Paige Marvel
 Margaret and Gerald Matchin
 Geoffrey Matlock
 Nancy Maxson
 Christopher May
 Ed McCombs
 Stuart McDaniel
 Kay McElroy
 Sharon McGahan
 Edward McHale
 Margaret Melton
 Linda and Jerry Mendelsohn
 Kathleen and Brian Meyer
 Lin Meyer
 Jean and J. Midgley
 Margret Miller
 Irene Miller
 Diane Moore
 Frank Moore
 Sally and Tom Mueller
 George Munro
 Carlton and Peter Nebreklievski
 Phyllis and Richard Nielsen
 Leonard Nunney
 Leslie Ogden and Steve Bennett
 Judith Owen
 Matty Park
 Benjamin Pecht
 Diane and The Hon. Steven Perren
 Linda Peterson
 Gene Pitman
 Marilyn Potter
 Susan Poulson
 Michelle Pirchard
 Lynda Racimora
 Chris Rae

\$100 – \$999 (cont.)

Ann and Rodney Resnik
 Margery Ricards
 Eleanor and Dr. Mark Richman
 Joyce A. Robinson
 Catherine Rose
 Judy Russo
 Karen Ryan
 Sophronia Sanders
 Doris Schaffer
 Timothy B. Schmit
 Cheryl Schuler
 Lorraine and Frank Serena
 Harvey Silverberg
 Vnette Slatten
 Mary Snyder
 Karen Spoentgen
 Berta and Allan Steele
 Michael Steinfeld
 Tania and Mark Sussman
 Donna Swift
 Judith and Melvyn Swope
 Norbert Tackman
 Marcia and Steve Tannehill

Rosemary Tobin
 Jane Totten
 Karen Trainor
 Allen Vail
 Annette Ward
 Robert Ward
 Marie Warner
 Marjorie Warren
 Pam Warren
 Kathy Weber
 Judith and Mort Weisman
 James Whitney
 Sylvia and Duane Wikholm
 Carol Ann Wiley
 Vernon Willet
 Duane Williamson
 Melvin Willis
 Judith and David Wittig
 Wanda Woessner
 Hiroko Yoshimoto
 Tricia and Arnold Zane
 Cherri Ziegler

\$50 – \$99

Anonymous
 Susan Adamich
 Maria Alamin
 Casey Barbaro
 Klara Benis
 Michael Beyries
 Lynne and Jim Brady
 Mary and Bob Braitman
 Arlene Braun
 Douglas Burbank
 James Burke
 Alisha Cardoza
 Kim Charnofsky
 Takako Colman
 Stephanie Coltrin-Beyries
 Lilia Coppa
 Jan Coultas
 Sharon Crane
 Chris Crice
 Susan Drapkin
 Elaine Edwards
 Kathleen and Robert Ellison
 Jodi and David Farrell
 Mary Jane Ferguson

Catherine and Cranston Gesell
 Martha Groszewski
 Jean Hall
 Betty Harris
 Karen Harter
 Kathryn Helms
 Anyce Hency
 Victoria Hill
 Virginia Iverson
 Randall Jones
 Kate Larsen
 Marianne and Theodore
 Leitereg
 Cheryl Lewis
 Lou Lotorto
 Melissa Manchester
 Elmira and Robert
 McDonough
 Ann and Dave Millican
 Janna Minsk
 Lindsay Nielson
 Debra and John O'Neal
 Ruth and George Owens
 Joanne Patten

Jone Pence
 Debbie and John Perry
 James Roberts
 Christopher Rowland
 Sandra Rush
 Charles Russell
 Jackie Saltz
 Karen Savitt
 Joyce Shipley
 Nancy and Arthur Simpson
 Jean Smith
 Dale Stamos
 Bruce W. Stark
 Dawn Stidham-Husted
 Judith Streamer
 Jenny Sullivan
 Renee Sutton
 Vivian and Bruce Weitz
 Alice West
 Thomas Wilcox
 Joanne Wolf

AMANDA McBROOM

Up Close and Personal



An intimate concert of
stories and songs
from the
Golden Globe
Award-winning creator of
"THE ROSE"

ONE-NIGHT-ONLY!
Saturday,
MAY 13, 2023

"A singer and songwriter who overflows with warmth and good humor, tempered with a hard, clear-eyed wisdom. What sets Ms. McBroom apart from everyone else is her voice, a forceful, flexible pop contralto, which she wields with the skill of an archer to hit the emotional bull's-eye."

~ *New York Times*

TICKETS:
www.rubiconheatre.org | 805.667.2900

GO BEHIND-THE-SCENES

RUBICON
Jewel Club

Rubicon's Jewel Club is a three-year sustaining membership program offering various behind-the-scenes benefits. Membership is a great way to make new friends with similar interests, meet many of the artists involved in directing and designing Rubicon productions, and gain insight into the creative process. Members attend directors' previews in private homes and receive other special perks.



If you'd like to join or receive
more information,
PLEASE CONTACT US TODAY.

RUBICON
Jewel Club



The listing below reflects Memberships received from January 1, 2022 - December 31, 2022. To become a new Jewel Club member, or to notify us regarding any errors or omissions, please contact Karyl Lynn Burns at 805.667.2912, ext. 224, or e-mail her at klburns@rubicontheatre.org.

GOLD COIN
(\$10,000)

Jim and Lena Lanum
 Barbara Meister

Susan Van Abel and Eric Oltmann
 Lori and Dr. Richard Reisman

DIAMOND
(\$6,000)

Carol and Robert Cole
 Nancy and Richard Francis
 Darrell Schultz

EMERALD
(\$3,000)

Jeanette and Dennis Longwill
 Laurie and Steven Weiss

Leah Palmer-Zondlo and James Zondlo

RUBY
(\$1,250)

Jeanne Adams Ph.D
 Donna Burger
 Randy Encinas and Doug Halter
 Judi and Manny Garcia
 Lynn and Al Geller
 Jim and Mary Harrison
 Genevieve and Tom Hinkle

Ann and Jon Ives
 Susan and Chuck Samonsky
 Diana Troik and Art Shaffman
 Jody Shapiro
 Rebecca and Jeffrey Smith
 Nancy Rasmussen and William Wayson
 Annie Winch

The listing below reflects education contributions received from March 1, 2022 - March 1, 2023. To make a donation, or to notify us regarding any errors or omissions, please contact Araceli Gonzalez Aggarwal, Development Associate, at 805.667.2912, ext. 246, or e-mail her at aaggarwal@rubicontheatre.org.

MAJOR EDUCATION SPONSORS

Mary Ann Cohen

The Jack Oakie and Victoria Horne Oakie Charitable Foundation

Barbara Meister

Loretta and Mike Merewether

EDUCATION CO-SPONSORS

Judith R. Nelson

COMMUNITY SPONSORS

Coastal Copy

ADDITIONAL EDUCATION DONORS

Susan Adamich
Anonymous
Penelope Barnds
Lauren Bassing
Norma Beck
Jane Berg
Gary Best
Russell Black
Bonnie Hellman Brown
Donna Burger
James Burke
Bonnie and Don Carlton
Kirsteen Clark
Carol and Robert Cole
Susan Colla
Loretta Collet
Freddie Contarino
Barbra Conway
Dale Alan Cooke
Melinda Dannenberg
Michelle and Matthew Demaria
Lynda and Fred Evans
Jodi and David Farrell
Carolee and Ken Felth
Judith and Mark Fleischman

Rebecca Fox
Nancy and Richard Francis
Judith Friedman
Katie Goode
Jeannie and Rick Graham
Julia Hamann
John Hankins
Eileen Hansen
Kathie Hira
Martha Jaffe
Mariel Kaikaina
Judy Kerr
Jordan Laby
Kate Larsen
Christine and Paul Magie
Lily Mallare
Carol Manzani
Todd Maroot
Frances and Jack Marshall
Geoffrey Matlock
Amanda McBroom and George Ball
Ed McCombs
Laurie McCoy
Elmira and Robert McDonough
Katharine Metropolis

Morgan Stanley GIFT
Heather Nicksay
Ruth and George Owens
Debbie and John Perry
Carey and Derek Poultney
Georgianna Regnier
Joyce A. Robinson
Safire Rose
Christopher Rowland
Stacy Ruppel
Charles Russell
Laura Santos
Doris Schaffer
Timothy B. Schmit
Lorraine and Frank Serena
Jody Shapiro
Nancy and Arthur Simpson
Dawn Stidham-Husted
Robert Stroh
Adela and Ken Trainor
Karen Trainor
Allen Vail
Alice West
Carol Ann Wiley
Stephanie and Kurt Zierhut

Tributes are made to honor a loved one, celebrate a special occasion, or remember those who have passed away. Thank you to the following individuals for making a tribute gift to the theatre. These listings reflect one-time gifts of \$100 or more, received March 1, 2022, to March 1, 2023. To make a gift, or to let us know about a correction, please contact Araceli Gonzalez Aggarwal, Development Associate, at 805.667.2912, ext. 246, or e-mail her aaggarwal@rubicontheatre.org.

In Honor of Karyl Lynn Burns

Barbara Meister
Wanda Woessner

In Honor of Mary Ann Cohen

Cheryl Schuler

In Honor of Jack and Rivie Drapkin

Susan Drapkin

In Honor of Judy Dugan

Robert Dugan

In Memory of John Egger

Peter Chapa

In Memory of Diana Einhorn

Leonard Dryer

In Honor of Joseph Fuqua

Norma Beck
Wanda Woessner

In Memory of Normand Kurtz

Susie and Margie Kurtz
Leo and Max
Jane Berg
Deanna Hehl
Jennifer Macafee

In Honor of Patricia Lay

Edward Lay

In Memory of Lou Liddi

Karyl Lynn Burns
Kay Liddi

In Memory of Celina McHale

Edward McHale

In Honor of Barbara Meister

Eleanor and Mark Richman
Jody Shapiro

In Memory of Larry Meister

Barbara Meister

In Honor of Loretta and Mike Merewether

Penelope Barnds
Brett Hilton

In Honor of Ted Neeley

Wanda Woessner

In Honor of Lori and Richard Reisman

Lori and Dr. Richard Reisman
Haady Lashkari
Barbara Meister

In Memory of Marlena Daly Roberts

Wanda Edwards

In Honor of Rubicon's Angels in Heaven

Morgan Stanley Gift Fund

In Memory of Barry Sanders

Sophonra Sanders

In Memory of Sue Stauffer

Ginger and Kim Caldwell

In Memory of The Rev. Dr. William Thomas Jr.

Linda Kerns

In Honor of Adela Trainor

Richard and Nancy Francis

In Honor of Bev and Kirby Ward

Jody Shapiro

In Memory of Kim Weiskopf

Jody Legendre

BEHIND-THE-SCENES

RUBICON THEATRE COMPANY

DARK OF THE MOON

ADDITIONAL *DARK OF THE MOON* PRODUCTION CREDITS

Technical Director	Anthony Colombo
Production Manager/Company Manager	Julia Donlon
Set Construction	Sets to Go
Associate Sound Designer	Danny Fiandaca
Lighting Design Assistants	Giselle Larios, Paul Oseguera
Costume Design Assistants	Rachel Jordan Brown, Dani Atlas
Load-In/Out Crew	Jimmy Callahan, Anthony Gomez, Allison Granville, Ben Hament, Chui Malik, Brandan Pineda
Scenic Artist.....	Marine Walton
Sound Engineers	Danny Fiandaca and Mazie Voss
Sound A2	Mazie Voss, Ryan Escobar
Follow Spot Operators	Anthony Gomez and Chui Malik
Master Electrician	Thomas Challain
Wardrobe Supervisor	Tara Vanoni
Wardrobe Crew	Lexi Watkins
Backstage Crew/Head Carpenter	Jimmy Callahan
Production Assistant.....	Danielle White

RUBICON ARTISTIC AND PRODUCTION STAFF

Producing Artistic Director	Karyl Lynn Burns
Artistic Director Emeritus	James O'Neil
Associate Artistic Director/Producer	Stephanie Coltrin
Production Manager/Company Manager	Julia Donlon
Education Director	Joseph Fuqua
Education Associate	Seryozha LaPorte
Technical Director	Anthony Colombo

RUBICON ADMINISTRATIVE STAFF

Marketing and Community Relations Director.....	Tessa Neeley
Development Coordinator	Araceli Gonzalez Aggarwal
Business and Operations Manager	Ellen White
Executive Assistant.....	Perla M. Ponti
Guest Services Manager.....	Steve Braun
Guest Services Associates	Barbara Dean, Katy Jarvis, Vanessa Navarro
Volunteer Coordinator/Guest Experience Manager	Sandy Aichner
Concessions Manager.....	Greg Johnson

ARTISTIC CONSULTANTS

Artistic Associates	Thomas S. Giamario, Jenny Sullivan
Company Members.....	George Ball, Joseph Fuqua, Joe Spano
Director of New Works	Michael Jackowitz
Director of International Programming.....	Katharine Farmer

BUSINESS CONSULTANTS

Strategic Development	Hannah-Beth Jackson
Computer Systems and IT	Israel Gallindo, Advanced Networks
General Contracting.....	Frank Torres, Torres Construction
Production Photos.....	Loren Haar, Haar Photography
Graphic Design, Marketing and Website.....	Mance Creative, Inc.

ABOUT RUBICON THEATRE COMPANY

RUBICON THEATRE COMPANY

DARK OF THE MOON

MISSION

Rubicon Theatre is a not-for-profit professional theatre company. The mission of the organization is to entertain, enrich and educate the region's residents and visitors through the production of innovative professional theatrical productions, festivals, special events and education programs.

AWARDS

Rubicon has won numerous regional and national awards including a prestigious Drama Desk Award for "Outstanding Revue", the L.A. Drama Critics' Circle Margaret Harford Award for "Sustained Excellence", 15 Ovation Awards and the Ventura Chamber of Commerce's Poinsettia Award for Non-Profit of the Year.

RUBICON THEATRE COMPANY

1006 E. Main St. Ventura, CA 93001

Call: 805.667.2900 Fax: 805.667.290

Offices: 805.667.2912

guestservices@rubicontheatre.org

www.RubiconTheatre.org

*Rubicon Theatre Company is a Non-Profit 501(c)3 organization.
Federal Tax ID #: 77-0495901*

SPECIAL THANKS

Elliott Blair

Jessica Krant



FRED SELLS... VENTURA COUNTY TO THE WORLD!

FRED EVANS

Co-founder RE/MAX Gold Coast Realtors



RE/MAX
GOLD COAST REALTORS
805.267.6701



THE FRED EVANS TEAM

**5720 RALSTON ST.,
VENTURA, CALIFORNIA**

DRE License No. 00893591

WWW.GLOBAL.REMAX.COM Translated in over 26 languages

Visit www.FredEvans.com for Current Active Listings



COMING SOON!

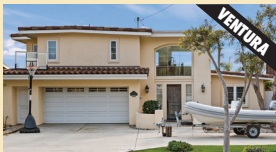
11088 RODEO DRIVE, Saddle Mountain Estates on 2.25 acres. 360-degree views of the Topa Topa Mountain & Pink Moment. Over 4400 sq. ft. w/ 4 BD, 3.5 BA. Oversized 960 sq. ft 3-car garage w/ guest house above. Designed by renowned architect Mark Whitman in 1991. Estate Sale is Priced to Sell at **\$2,350,000**. www.11088RodeoDr.com



1238 COLINA VISTA Custom Ventura Ondulando Villa, with Commanding Views. Views of ocean, island, mountain, & city lights. Reminiscent of an Italian Palazzo, this 3 BR, 4 full BA home was built in 2003 w/ approx. 4432 sq. ft. & sits on an approx. 1/4 acre lot. Mother-in-law or extra guest suite downstairs w/ great room & kitchenette. **Listed for \$2,150,000** www.1238ColinaVista.com



756 MONTE VISTA AVENUE Custom Built Spanish / Craftsman-style home Ventura Clearpoint. Views of the ocean, islands, mountains, city lights, sunsets & sunrise views. Single level built in 2020 w/ 4 BRs, 2.5 BAs w/ approx. 2350 sq. ft. & 10,014 sq. ft lot. Open floor plan w/ Top-of-the-line features throughout. Home built by elite architect & builder. **Listed for \$1,895,000** 756MonteVistaAvenue.com



1776 VISTA DEL MAR DRIVE, Custom Ventura 180-Degree Panoramic Ocean, Island & Coastline View Home. Overlooking San Buenaventura State Beach & w/ white-water views from almost every room. Natural light & lots of windows. Approx. 2408 sq. ft, 3 BD, 2 BA, & over-1/4 acre. **OFFERED AT \$1,795,000** www.1776VistaDelMarDrive.com



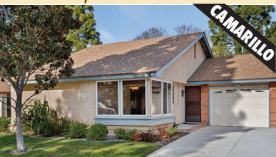
696 TIERNEY AVENUE Central Ventura Camden Estates. Built in 2001 w/ 5 BD & 3 BA, approx. 3578 sq. ft & a 7233 sq. ft lot. Lower-level bedroom & bath, family room, den, & formal dining. Close to restaurants & shopping. Priced to sell quickly! **SOLD FOR \$1,255,000** www.696TierneyAve.com



1119 VIA CIELITO Ventura Ondulando Hillside. Ocean & island view single story 3 BD, 2.5 BA, approx. 1963 sq. ft, over 1/3-acre view lot. Overlooking Hidden Valley & the city below. Living room with brick front fireplace. Dining room, family room, beautiful inlaid brick driveway with low maintenance landscaping. **SOLD FOR \$1,253,000** www.1119ViaCielito.com



216 DOROTHY AVENUE Ventura Mid-Town, mid-century in a sought-after neighborhood. Restored & upgraded 2 BD, 2 BA home. Beautiful refinished hardwood floors. Newly renovated kitchen & bath. Built in 1952, approx. 1449 SF, lot 7238 SF. Professionally landscaped. Close to shopping, beach, hospitals, schools & Ventura College. **SOLD FOR \$1,205,000** www.216Dorothy.com



13320 VILLAGE 13, Camarillo Del Mar Leisure Village. Highly upgraded 2 BDs, 2 BA home w/ tens of thousands in improvements. Built in 1976 w/ approx. 1108 sq. ft. Travertine floors, a newer covered patio, remodeled Kitchen, newer dual-paned windows, wood/like flooring, & updated baths. **LISTED FOR \$575,000** www.13320Village13.com



348 HADLEY DRIVE Ventura Imperial Family MHP. Like-new Fleetwood Vogue II 3 BR, 2 BA coach w/ thousands in upgrades. Built in 2015, approx. 1650 sq. ft. Open floor plan w/ high ceilings, updated kitchen, air conditioning, skylight, security system, & custom-built workshop. Family Park includes a pool, spa, clubhouse, playground, & basketball court. **Listed for \$449,000**. www.348HadleyDrive.com